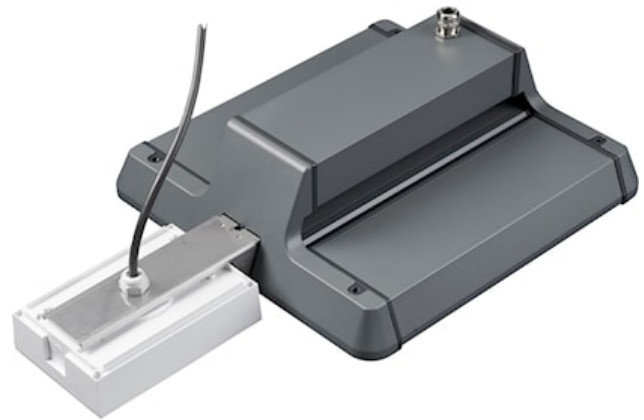


SYLBAY GEN II EM KIT ESCAPE ROUTE

Artikelnummer 0040030

SYLVANIA



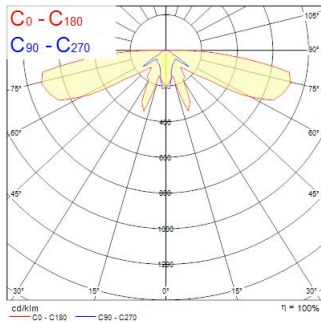
Sylbay Gen II EM Kit Escape Route provides a simple conversion of High Bay fitting with a high performance self-contained LED emergency luminaire KIT suitable for escape routes, delivering 3 hours rated emergency output. Self testing with DALI monitoring capability. Supplied with all mounting accessories

Technische Werte

Photometrie

Distance [m]	Cone diameter [m]	Illuminance [lx]
0.5	1.55 12.14	180 14 0
1.0	3.10 24.33	45 3 0
1.5	4.65 36.49	18 1 0
2.0	6.21 48.65	9 0 0
2.5	7.76 60.82	4 0 0
3.0	9.31 72.99	2 0 0

Distance [m] Cone diameter [m] Illuminance [lx]
 — C0 - C180 (Half beam angle: 170.6°)
 — C90 - C270 (Half beam angle: 114.4°)



SYLBAY GEN II EM KIT ESCAPE ROUTE

Artikelnummer 0040030

SYLVANIA

Allgemeine Daten

Produktname	SYLBAY GEN II EM KIT ESCAPE ROUTE
Technologie	LED
Allgemeine Anwendungsbereiche	Logistics & Industry
ETIM Klasse	EC002556
Garantie	3 Jahre

Optische Daten

Leuchtenlichtstrom (lm)	217
Farbwiedergabeindex (Ra)	75
Photobiological Risk Group	RG1
Luminous flux (emergency) (lm)	200

Elektrische Daten

Dauer Notbeleuchtung (h)	3
Leistungsfaktor der Lampe	0.44
Elektrische Schutzklasse	Class II

Physikalische Daten

Gehäusefarbe	White
IP Schutzart	IP65
IK Schutzart	IK03
Gewicht (kg)	1.1

Packaging

EAN Code	5410288400303
Einzelverpackung Länge (cm)	32.5
Einzelverpackung Breite (cm)	32.5
Einzelverpackung Tiefe (cm)	12.5
DUN 14 (außen)	05410288400303
Anzahl an Einheiten je Außenverpackung	1
Außenverpackung Länge (cm)	32.5
Außenverpackung Breite (cm)	32.5
Außenverpackung Tiefe (cm)	12.5