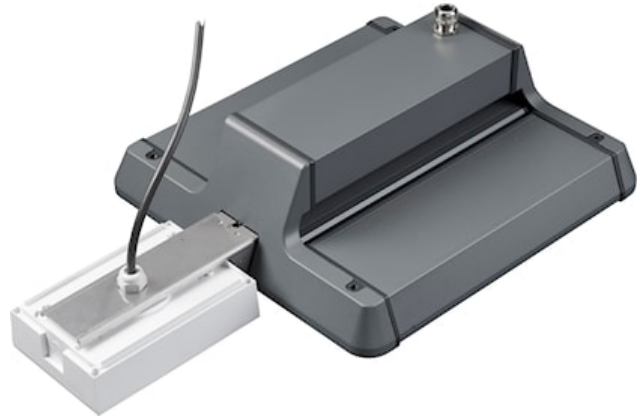


# Sylbay Gen II EM Kit Standard

Item No: 0040027



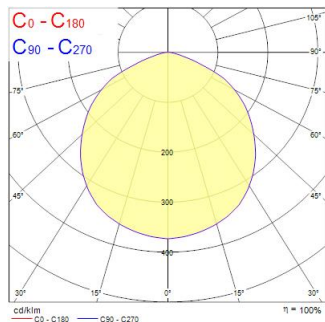
Sylbay Gen II EM Kit Standard provides a simple conversion of High Bay fitting with a high performance self-contained LED emergency luminaire KIT suitable for open areas, delivering 3 hours rated emergency output. Self testing with DALI monitoring capability. Supplied with all mounting accessories

## Technical Assets

### Photometrics

| Distance [m] | Cone diameter [m] | Beam diameter [m] | Beam diameter [ft] | Illuminance [lx] |
|--------------|-------------------|-------------------|--------------------|------------------|
| 0.5          | 1.45              | 0.07              | 0.23               | 299              |
| 1.0          | 2.90              | 0.14              | 0.46               | 75               |
| 1.5          | 4.35              | 0.21              | 0.69               | 33               |
| 2.0          | 5.80              | 0.28              | 0.92               | 19               |
| 2.5          | 7.25              | 0.35              | 1.15               | 12               |
| 3.0          | 8.70              | 0.42              | 1.38               | 8                |

Distance [m]    Cone diameter [m]    Beam diameter [m]    Beam diameter [ft]    Illuminance [lx]  
 C0 - C180 (Half beam angle: 110.8°)



# Sylbay Gen II EM Kit Standard

Item No: 0040027

**SYLVANIA**

## General data

|                     |                               |
|---------------------|-------------------------------|
| Product name        | Sylbay Gen II EM Kit Standard |
| Technology          | Emergency Pack                |
| General application | Logistics & Industry          |
| ETIM Class          | EC002472                      |
| Warranty            | 3 years                       |

## Optical data

|                                |     |
|--------------------------------|-----|
| Fixture luminous flux (lm)     | 200 |
| CRI (Ra)                       | 75  |
| Photobiological Risk Group     | RG1 |
| Luminous flux (emergency) (lm) | 200 |

## Electrical data

|  |          |
|--|----------|
| Emergency duration (h)                   | 3        |
| Primary Supply/Product voltage - min (V) | 220      |
| Primary Supply/Product voltage - max (V) | 240      |
| Lamp power factor                        | 0.44     |
| Electrical protection                    | Class II |

## Physical data

|                |       |
|----------------|-------|
| Housing colour | White |
| IP rating      | IP65  |
| IK rating      | IK03  |
| Weight (kg)    | 1.1   |

## Packaging

|                                       |                |
|---------------------------------------|----------------|
| Product EAN number                    | 5410288400273  |
| Packaging single length / height (cm) | 32.5           |
| Packaging single width (cm)           | 32.5           |
| Packaging single depth (cm)           | 12.5           |
| DUN14 (inner)                         | 05410288400273 |
| Units per outer package               | 1              |
| Packaging outer length / height (cm)  | 32.5           |
| Packaging outer width (cm)            | 32.5           |
| Packaging outer depth (cm)            | 12.5           |