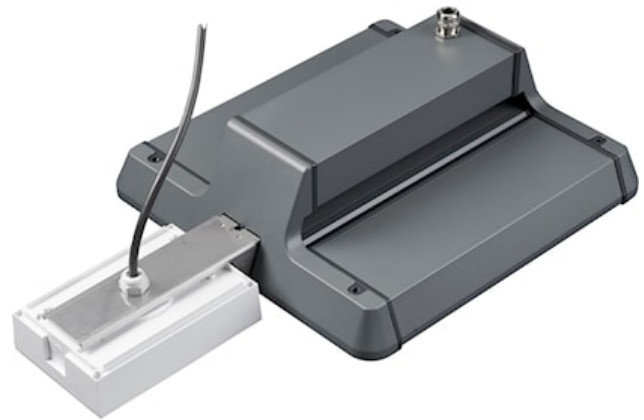


SYLBAY GEN II EM KIT ESCAPE ROUTE

Item No: 0040030



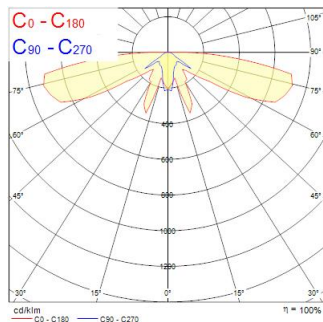
Sylbay Gen II EM Kit Escape Route provides a simple conversion of High Bay fitting with a high performance self-contained LED emergency luminaire KIT suitable for escape routes, delivering 3 hours rated emergency output. Self testing with DALI monitoring capability. Supplied with all mounting accessories

Technical Assets

Photometrics

Distance [m]	Cone diameter [m]	Beam diameter [m]	Beam diameter [m]	Illuminance [lx]
0.5	1.55 12.14	0.775	0.775	180 14 0
1.0	3.10 24.33	1.55	1.55	45 3 0
1.5	4.65 36.49	2.325	2.325	18 2 0
2.0	6.21 48.65	3.105	3.105	10 1 0
2.5	7.76 60.82	3.88	3.88	7 1 0
3.0	9.31 72.98	4.655	4.655	5 1 0

Distance [m] Cone diameter [m] Illuminance [lx]
 — C0 - C180 (Half beam angle: 170.6°)
 — C90 - C270 (Half beam angle: 114.4°)



SYLBAY GEN II EM KIT ESCAPE ROUTE

Item No: 0040030

SYLVANIA

General data

Product name	SYLBAY GEN II EM KIT ESCAPE ROUTE
Technology	LED
General application	Logistics & Industry
ETIM Class	EC002556
Warranty	3 years

Optical data

Fixture luminous flux (lm)	217
CRI (Ra)	75
Photobiological Risk Group	RG1
Luminous flux (emergency) (lm)	200

Electrical data

Emergency duration (h)	3
Lamp power factor	0.44
Electrical protection	Class II

Physical data

Housing colour	White
IP rating	IP65
IK rating	IK03
Weight (kg)	1.1

Packaging

Product EAN number	5410288400303
Packaging single length / height (cm)	32.5
Packaging single width (cm)	32.5
Packaging single depth (cm)	12.5
DUN14 (inner)	05410288400303
Units per outer package	1
Packaging outer length / height (cm)	32.5
Packaging outer width (cm)	32.5
Packaging outer depth (cm)	12.5