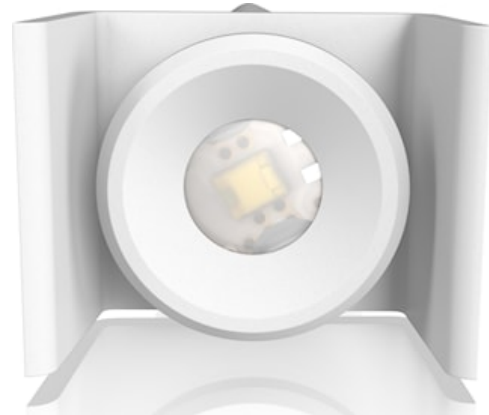


# SylSafe XSpot OA R EM3 NM MS

Item No: 0041775

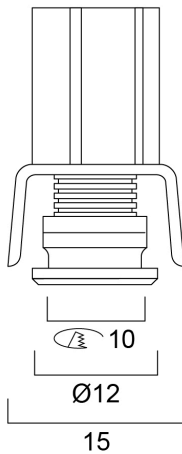
**SYLVANIA**



SylSafe XSpot OA R EM3 NM MS is a miniature emergency recessed spotlight with small form factor - cut-out diameter: 10mm. Non-maintained 3 hr emergency duration with NiMH rechargeable battery. Recharge period 24 hours. Quick and easy installation with driver module and battery pack contained in articulated case that can be placed near the luminaire. Suitable for sheet metal installation. 80lm, 2.8W, IK03, IP20. Power Factor 0.45. Class II electrical construction.

## Technical Assets

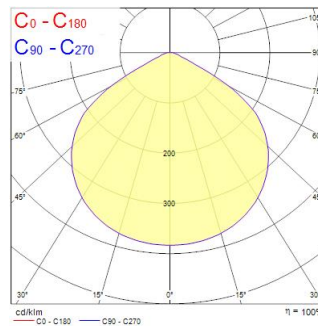
### Dimensions (mm)



### Photometrics

Distance [m]	Cone diameter [m]	Beam diameter [m]	Beam angle [°]	Illuminance [lx]
0.5	1.51	0.07	95.4°	115
1.0	3.01	0.14	95.4°	30
1.5	4.52	0.21	95.4°	13
2.0	6.02	0.28	95.4°	7
2.5	7.53	0.35	95.4°	5
3.0	9.03	0.42	95.4°	3

Distance [m]    Cone diameter [m]    Beam diameter [m]    Beam angle [°]    Illuminance [lx]  
 — C0 - C180 (Half beam angle: 112.8°)



# SylSafe XSpot OA R EM3 NM MS

Item No: 0041775

**SYLVANIA**

## General data

Product name	SylSafe XSpot OA R EM3 NM MS
Technology	LED
Mount	Ceiling recessed mounting
General application	Office, Hospitality, Retail, Education, Museums & Galleries
ETIM Class	EC001957
Warranty	5 years

## Optical data

Fixture luminous flux (lm)	80
Luminaire efficacy (lm/W)	29
Correlated colour temperature (k)	5700
CRI (Ra)	70
Photobiological Risk Group	RG2
Luminous flux (emergency) (lm)	80

## Electrical data

Emergency duration (h)	3
Primary Supply/Product voltage - min (V)	220
Primary Supply/Product voltage - max (V)	240
Lamp power factor	0.45
Electrical protection	Class II
Control gear required	Yes
Drive current (mA)	30
Nominal Frequency (Hz)	50/60Hz

## Physical data

Housing colour	White
IP rating	IP20
IK rating	IK03
Nominal Product Length (mm)	12
Nominal Product Width (mm)	12
Nominal Product Height (mm)	26.5
Weight (kg)	0.32

## Packaging

Product EAN number	5410288417752
Packaging single length / height (cm)	21.0
Packaging single width (cm)	9.3
Packaging single depth (cm)	4.7
DUN14 (inner)	15410288417759
Units per outer package	25
Packaging outer length / height (cm)	42.4
Packaging outer width (cm)	29.8
Packaging outer depth (cm)	28.0