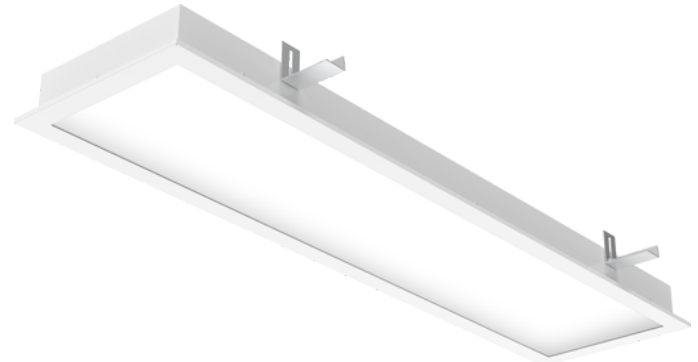


PANEL IP66 CR R 598R CMPG L3 4290LM 840 DALI EM

Item No: 0042779

SYLVANIA

LiteGuard™



PANEL IP66 CR R 598R CMPG L3 4290LM 840 DALI EM is a recessed LED lighting fixture designed for clean areas in hospitals, laboratories, microelectronics production, food industry, clean screwless design for easy cleaning with rounded edges of the frame eliminates the sediments and bacteriums creation, powder coated steel body with white finishing (RAL9016), diffuser made of clear tempered safety glass and MP plexiglass, 1247x312x79mm luminaire dimensions, 4290m luminous flux, 37W system power, 116lm/W efficacy, power consumption in EM mode 3.8W & 400lm luminous flux, CRI Ra>80 4000K CCT light source, suitable for ambient temperatures from -20°C up to 60°C, lifespan: L80B10 70000h @Ta 30°C, L70B10 100000hr @ Ta 30°C, certified for clean areas in compliance with ISO 14644-1 class 2-9, minimum height of mounting space is 200 mm, electrical connection by means of ADELS connector, maximum cross section of wires 2,5 mm², impact protection IK08, ingress protection rating IP66/IP50 upper side of the luminaire, electrical protection Class I, DALI dimmable driver, 3-hours integrated EM, 5 years warranty, UGR<19.

PANEL IP66 CR R 598R CMPG L3 4290LM 840 DALI EM

Item No: 0042779



Technical Assets

Photometrics

| Distance [m] | Cone diameter [m] | Illuminance [lx] |
|--------------|-------------------|----------------------|
| 0.5 | 0.82 0.82 | 8472 2181 2029 |
| 1.0 | 1.65 1.63 | 2088 548 802 |
| 1.5 | 2.47 2.45 | 1001 242 220 |
| 2.0 | 3.30 3.26 | 500 136 130 |
| 2.5 | 4.12 4.06 | 279 67 66 |
| 3.0 | 4.95 4.88 | 203 51 51 |

Distance [m] Cone diameter [m] Illuminance [lx]
 — C0 - C180 (Half beam angle: 75.4°)
 — C90 - C270 (Half beam angle: 75.0°)



General data

| | |
|----------------------------------|---|
| Product name | PANEL IP66 CR R 598R CMPG L3 4290LM 840 DALI EM |
| Technology | LED |
| Cap/Base | N/A |
| Housing | Steel |
| Mount | Ceiling recessed mounting |
| Built in presence detector | NONE |
| General application | Logistics & Industry |
| Operating temperature range (°C) | 5°C...+35°C |
| Virtual assistant compatibility | N/A |
| ETIM Class | EC002892 |
| Warranty | 5 years |

Optical data

| | |
|-----------------------------------|---------------|
| Fixture luminous flux (lm) | 4290 |
| Luminaire efficacy (lm/W) | 116 |
| Correlated colour temperature (k) | 4000 |
| Light colour | Neutral White |
| CRI (Ra) | 80 |
| Colour Variation Initial (SDCM) | SDCM3 |
| Beam Angle (°) | 90 |
| Distribution type | Symmetric |
| Glare control | < 19 |
| Photobiological Risk Group | RG0 |
| Luminous flux (emergency) (lm) | 400 |

PANEL IP66 CR R 598R CMPG L3 4290LM 840 DALI EM

Item No: 0042779

SYLVANIA

Electrical data

| | |
|--|-----------------------------|
| Emergency type | |
| Emergency duration (h) | 3 |
| Total power consumption (W) | 37 |
| Primary Supply/Product voltage - min (V) | 240.0 |
| Primary Supply/Product voltage - max (V) | 220.0 |
| Lamp power factor | 0.98 |
| THD (at 230 V, 50 Hz, full load, at 100% dimming level) ≤ xx.x % | 9 |
| Electrical protection | Class I |
| Control gear type | LED driver constant current |
| Dimmable | Yes |
| Dimming method | DALI-2 |
| Inrush Current (A) | 22.4 |
| Inrush Duration (µs) | 176 |
| Energy Efficiency Class (A->G) of contained light source | B |
| Nominal Frequency (Hz) | 50/60Hz |
| Max. products per 10A C Breaker | 21 |
| Max. products per 16A C Breaker | 36 |
| Max. products per 16A B Breaker | 22 |
| Connectable conductor cross section - Min (mm ²) | 0.5 |
| Connectable conductor cross section - Max (mm ²) | 2.5 |

Lifetime data

| | |
|------------------|--------|
| Lifespan L70 B50 | 100000 |
|------------------|--------|

Physical data

| | |
|-----------------------------|----------------------------------|
| Housing colour | RAL 9016 - Traffic white / Bezel |
| IP rating | IP66 |
| IK rating | IK08 |
| Diffuser finish | Prismatic |
| Diffuser material | Safety tempered glass |
| Nominal Product Length (mm) | 1247 |
| Nominal Product Width (mm) | 312 |
| Nominal Product Height (mm) | 79 |
| Weight (kg) | 12.0 |

Packaging

| | |
|---------------------------------------|----------------|
| Product EAN number | 5410288427799 |
| Packaging single length / height (cm) | 127.5 |
| Packaging single width (cm) | 34.0 |
| Packaging single depth (cm) | 9.5 |
| DUN14 (inner) | 05410288427799 |
| Units per outer package | 1 |
| Packaging outer length / height (cm) | 127.5 |
| Packaging outer width (cm) | 34.0 |
| Packaging outer depth (cm) | 9.5 |

Safety data

| | |
|----------------------------------|------|
| Glow Wire Test (°C) | 850 |
| Optimal operating condition (°C) | 5-35 |