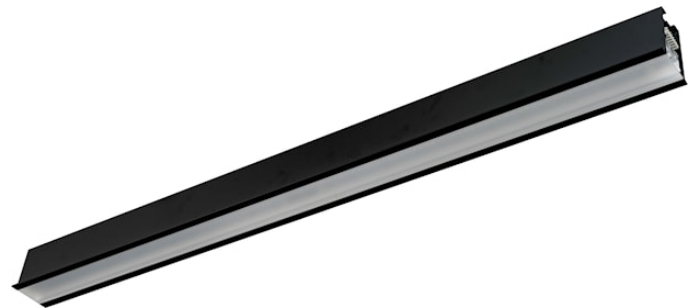


CONTINUUM PLUS TR 1.5 940 CO UGR D DALI EM B

Item No: 2064697

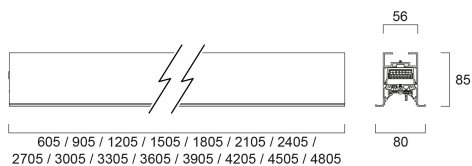
Concord



CONTINUUM PLUS TR 1.5 940 CO UGR D DALI EM B is a linear luminaire with trim body for plasterboard ceilings, suitable for recessed installation either horizontally or vertically, recessed mounting accessory, direct light distribution, compact and minimalist design, ideal for offices, meeting rooms, corridors, education facilities, museums and libraries, black (RAL9005) finishing, extruded aluminium body, 1505x80x85mm dimensions, prismatic diffuser combined with lenses, 4000K (neutral white) colour temperature, total system power: 29.5W, total fixture output: 3950lm, luminaire efficacy: 134lm/W, colour rendering: Ra >90, LED Chromacity: 3 step MacAdam ellipse, lifespan: 89,000 hours L80B50, operating voltage: 220-240V / 50-60Hz, drive current: 625mA, electronic driver, DALI dimmable, 3-hours LiFePO4 integrated DALI Self Test emergency, Class I electrical protection, IP20, IK03, suitable for internal environment only. The product is delivered without diffuser, end cap, suspension or power supply kit, the accessories eg rolled diffuser (2064607) to be ordered separately.

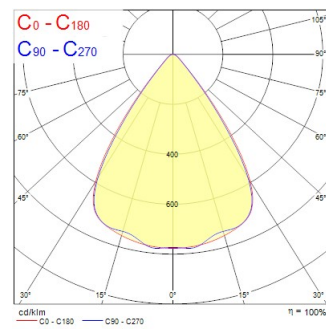
Technical Assets

Dimensions (mm)



Photometrics

Distance [m]	Cone diameter [m]	Beam diameter [m]	Beam diameter [ft]	Beam diameter [in]	Illuminance [lx]
0.5	0.71 0.73	0.71 0.73	2.33 2.39	9.21 9.40	12778 3300 3300
1.0	1.42 1.46	1.42 1.46	4.66 4.76	18.42 18.82	3099 882 882
1.5	2.12 2.19	2.12 2.19	6.96 7.15	27.63 28.11	1354 774 774
2.0	2.83 2.92	2.83 2.92	9.28 9.51	36.84 37.41	787 611 611
2.5	3.54 3.65	3.54 3.65	11.60 11.88	46.05 46.83	491 438 438
3.0	4.25 4.38	4.25 4.38	13.92 14.26	55.26 56.25	341 341 341



CONTINUUM PLUS TR 1.5 940 CO UGR D DALI EM B

Item No: 2064697

Concord

General data

Product name	CONTINUUM PLUS TR 1.5 940 CO UGR D DALI EM B
Technology	LED
Cap/Base	N/A
Housing	Aluminium
Mount	Ceiling recessed mounting
Built in presence detector	NONE
Fixture rating	Enclosed
General application	Office, Education, Retail
Operating temperature range (°C)	1°C...+25°C
Virtual assistant compatibility	N/A
ETIM Class	EC002892
Warranty	5 years

Optical data

Fixture luminous flux (lm)	3950
Luminaire efficacy (lm/W)	134
Correlated colour temperature (k)	4000
Light colour	Neutral White
CRI (Ra)	90
Colour Variation Initial (SDCM)	SDCM3
Distribution type	Symmetric
Glare control	< 19
Photobiological Risk Group	RG1
Luminous flux (emergency) (lm)	270

Electrical data

Emergency mode	Maintained
Emergency type	
Emergency duration (h)	3
Total power consumption (W)	29.5
Primary Supply/Product voltage - min (V)	220.0
Primary Supply/Product voltage - max (V)	240.0
Lamp power factor	0.98
THD (at 230 V, 50 Hz, full load, at 100% dimming level) ≤ xx.x %	6.1
Electrical protection	Class I
Control gear required	No
Control gear type	LED driver constant current
Dimmable	Yes
Dimming method	DALI-2
Minimum dimming level (%)	1
Drive current (mA)	625
Inrush Current (A)	35
Inrush Duration (µs)	170
Energy Efficiency Class (A->G) of contained light source	B, C (more than 1 Light Source)
Nominal Frequency (Hz)	50/60Hz
LED Flickering Rate	Ultra low (5% or less)
Max. products per 10A C Breaker	21
Max. products per 13A C Breaker	28
Max. products per 16A C Breaker	35
Max. products per 20A C Breaker	45
Max. products per 10A B Breaker	13
Max. products per 13A B Breaker	17
Max. products per 16A B Breaker	21
Max. products per 20A B Breaker	27
Connectable conductor cross section - Min (mm ²)	0.75
Connectable conductor cross section - Max (mm ²)	1.5

CONTINUUM PLUS TR 1.5 940 CO UGR D DALI EM B

Item No: 2064697

Concord

Lifetime data

Lifespan L70 B50	100000
Lifespan L80 B50	89000

Physical data

Housing colour	RAL 9005 - Jet black
IP rating	IP20
IK rating	IK03
Diffuser finish	Transparent
Diffuser material	PC Polycarbonate
Reflector finish	Not Applicable
Nominal Product Length (mm)	1505
Nominal Product Width (mm)	80
Nominal Product Height (mm)	85
Weight (kg)	4.4

Packaging

Product EAN number	5025768646975
Packaging single length / height (cm)	161.0
Packaging single width (cm)	11.7
Packaging single depth (cm)	14.7
DUN14 (inner)	05025768646975
Units per outer package	1
Packaging outer length / height (cm)	161.0
Packaging outer width (cm)	11.7
Packaging outer depth (cm)	14.7

Safety data

Glow Wire Test (°C)	650
Optimal operating condition (°C)	1-25