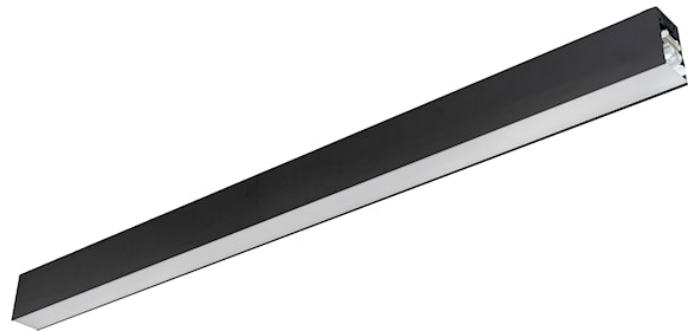


# CONTINUUM PLUS 3.6 940 CO OPAL DI DALI B

Item No: 2064884

Concord



CONTINUUM PLUS 3.6 940 CO OPAL DI DALI B is a linear luminaire with trimless body for suspended mounting, various mounting accessories, direct/indirect light distribution (60/40 ratio), compact and minimalist design, ideal for offices, meeting rooms, corridors, education facilities, museums and libraries, black (RAL9005) finishing, extruded aluminium body, 3605x56x85mm dimensions, opal diffuser, 4000K (neutral white) colour temperature, total system power: 108W, total fixture output: 15300lm, luminaire efficacy: 142lm/W, colour rendering: Ra >90, LED Chromacity: 3 step MacAdam ellipse, lifespan: 89,000 hours L80B50, operating voltage: 220-240V / 50-60Hz, drive current: 2550mA, electronic driver, DALI dimmable, direct/indirect independently addressable, Class I electrical protection, IP20, IK03, suitable for internal environment only. The product is delivered without diffuser, end cap, suspension or power supply kit, the accessories eg rolled diffuser (2064605) to be ordered separately.

## Technical Assets

### Dimensions (mm)



### Photometrics

Distance [m]	Cone diameter [m]	Beam diameter [m]	Beam diameter [ft]	Illuminance [lx]
0.5	1.22 1.31	0.76 0.81	2.49 2.62	10230 9577 1485
1.0	2.45 2.62	1.52 1.62	4.98 5.24	3310 2987 271
1.5	3.68 3.92	2.28 2.43	7.46 7.97	1471 1366 186
2.0	4.90 5.23	3.04 3.26	9.94 10.66	827 763 93
2.5	6.13 6.54	3.80 4.06	12.42 13.36	590 547 69
3.0	7.36 7.85	4.56 4.87	14.90 15.96	395 367 47



# CONTINUUM PLUS 3.6 940 CO OPAL DI DALI B

Item No: 2064884

## Concord

### General data

Product name	CONTINUUM PLUS 3.6 940 CO OPAL DI DALI B
Technology	LED
Cap/Base	N/A
Housing	Aluminium
Mount	Suspended
Built in presence detector	NONE
Fixture rating	Enclosed
General application	Office, Education, Retail
Operating temperature range (°C)	1°C...+25°C
Virtual assistant compatibility	N/A
ETIM Class	EC002892
Warranty	5 years

### Optical data

Fixture luminous flux (lm)	15300
Luminaire efficacy (lm/W)	142
Correlated colour temperature (k)	4000
Light colour	Neutral White
CRI (Ra)	90
Colour Variation Initial (SDCM)	SDCM3
Distribution type	Symmetric
Glare control	< 25
Photobiological Risk Group	RG1

### Electrical data

Emergency type	
Total power consumption (W)	108
Primary Supply/Product voltage - min (V)	220.0
Primary Supply/Product voltage - max (V)	240.0
Lamp power factor	0.98
THD (at 230 V, 50 Hz, full load, at 100% dimming level) ≤ xx.x %	10
Electrical protection	Class I
Control gear required	No
Control gear type	LED driver constant current
Dimmable	Yes
Dimming method	DALI-2
Minimum dimming level (%)	1
Drive current (mA)	2550
Inrush Current (A)	31.5
Inrush Duration (µs)	215
Energy Efficiency Class (A->G) of contained light source	C, B(more than 1 Light Source)
Nominal Frequency (Hz)	50/60Hz
LED Flickering Rate	Ultra low (5% or less)
Max. products per 10A C Breaker	15
Max. products per 13A C Breaker	20
Max. products per 16A C Breaker	25
Max. products per 20A C Breaker	32
Max. products per 10A B Breaker	9
Max. products per 13A B Breaker	12
Max. products per 16A B Breaker	15
Max. products per 20A B Breaker	19
Connectable conductor cross section - Min (mm <sup>2</sup> )	0.75
Connectable conductor cross section - Max (mm <sup>2</sup> )	1.5

# CONTINUUM PLUS 3.6 940 CO OPAL DI DALI B

Item No: 2064884

Concord

## Lifetime data

Lifespan L70 B50	100000
Lifespan L80 B50	89000

## Physical data

Housing colour	RAL 9005 - Jet black
IP rating	IP20
IK rating	IK03
Diffuser finish	Opal
Diffuser material	PC Polycarbonate
Reflector finish	Not Applicable
Nominal Product Length (mm)	3605
Nominal Product Width (mm)	56
Nominal Product Height (mm)	85
Weight (kg)	9.6

## Packaging

Product EAN number	5025768648849
Packaging single length / height (cm)	371.0
Packaging single width (cm)	11.7
Packaging single depth (cm)	14.7
DUN14 (inner)	05025768648849
Units per outer package	1
Packaging outer length / height (cm)	371.0
Packaging outer width (cm)	11.7
Packaging outer depth (cm)	14.7

## Safety data

Glow Wire Test (°C)	650
Optimal operating condition (°C)	1-25