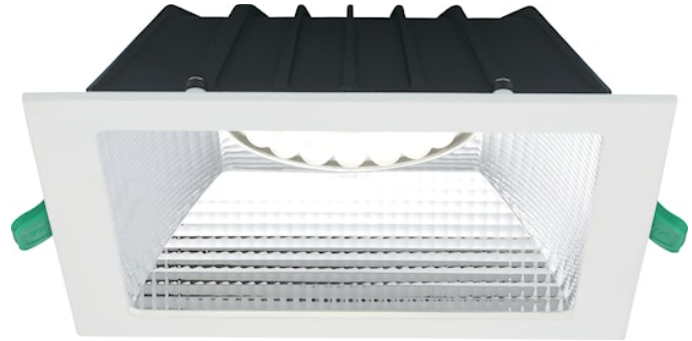


Insaver UGR19 IP54 200 2350lm 830 Square SSA01D

Item No: 0030626

SYLVANIA

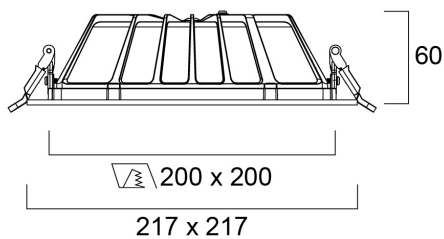
PROTM



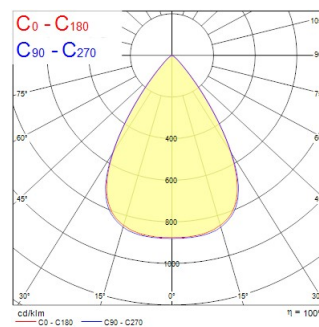
Insaver is a ceiling recessed LED downlight (IP54 from the front), Die-cast aluminium body, loop in loop out connector for quick installation, SylSmart driver SSA01D, 20W; 2350lm; 118lm/W; 3000K; UGR <19 with shallow product depth 65mm. Meets TP(a) requirements.

Technical Assets

Dimensions (mm)



Photometrics



Insaver UGR19 IP54 200 2350lm 830 Square SSA01D

Item No: 0030626

SYLVANIA

General data

Product name	Insaver UGR19 IP54 200 2350lm 830 Square SSA01D
Technology	LED
Cap/Base	N/A
Housing	Aluminium
Mount	Ceiling recessed mounting
Built in presence detector	NONE
General application	Hospitality, Office, Retail
Operating temperature range (°C)	-20°C...+40°C
Virtual assistant compatibility	N/A
ETIM Class	EC001744
Warranty	5 years

Optical data

Fixture luminous flux (lm)	2350
Luminaire efficacy (lm/W)	118
Correlated colour temperature (k)	3000
Light colour	Warm White
CRI (Ra)	80
Colour Variation Initial (SDCM)	SDCM3
Beam Angle (°)	70
Distribution type	Symmetric
Glare control	< 19
Photobiological Risk Group	RG1

Electrical data

Emergency type	
Total power consumption (W)	20
Primary Supply/Product voltage - min (V)	220.0
Primary Supply/Product voltage - max (V)	240.0
Lamp power factor	0.9
THD (at 230 V, 50 Hz, full load, at 100% dimming level) ≤ xx.x %	20.0
Electrical protection	Class II
Control gear type	LED driver constant current
Dimmable	No
Dimming method	N/A
Drive current (mA)	600
Inrush Current (A)	20
Inrush Duration (µs)	101
Energy Efficiency Class (A->G) of contained light source	D
Nominal Frequency (Hz)	50/60Hz
LED Flickering Rate	Ultra low (5% or less)
Max. products per 10A C Breaker	38
Max. products per 16A C Breaker	57
Max. products per 16A B Breaker	45
Connectable conductor cross section - Min (mm ²)	0.75
Connectable conductor cross section - Max (mm ²)	1.5

Insaver UGR19 IP54 200 2350lm 830 Square SSA01D

Item No: 0030626

SYLVANIA

Lifetime data

Lifespan L70 B50	100000
Lifespan L70 B20	100000
Lifespan L70 B10	100000
Lifespan L80 B50	100000
Lifespan L80 B20	88000
Lifespan L80 B10	80000
Lifespan L90 B50	50000
Lifespan L90 B20	43000
Lifespan L90 B10	39000

Physical data

Housing colour	RAL 9010 - Pure white
IP rating	IP54/20
IK rating	IK07
Diffuser finish	Other
Diffuser material	None
Reflector finish	Not Applicable
Nominal Product Length (mm)	217
Nominal Product Width (mm)	217
Nominal Product Height (mm)	60
Weight (kg)	0.8

Packaging

Product EAN number	5410288306261
Packaging single length / height (cm)	25.0
Packaging single width (cm)	25.0
Packaging single depth (cm)	8.0
DUN14 (inner)	15410288306268
Units per outer package	12
Packaging outer length / height (cm)	51.5
Packaging outer width (cm)	51.5
Packaging outer depth (cm)	26.0

Safety data

Glow Wire Test (°C)	850
Optimal operating condition (°C)	-20-40