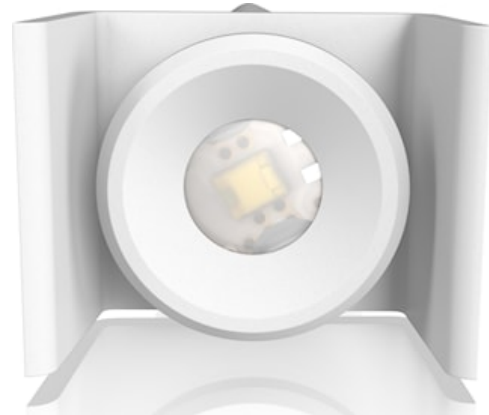


# SylSafe XSpot OA R EM3 NM MS

Item No: 0041775

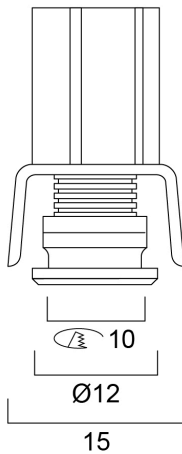
**SYLVANIA**



SylSafe XSpot OA R EM3 NM MS is a miniature emergency recessed spotlight with small form factor - cut-out diameter: 10mm. Non-maintained 3 hr emergency duration with NiMH rechargeable battery. Recharge period 24 hours. Quick and easy installation with driver module and battery pack contained in articulated case that can be placed near the luminaire. Suitable for sheet metal installation. 80lm, 2.8W, IK03, IP20. Power Factor 0.45. Class II electrical construction.

## Technical Assets

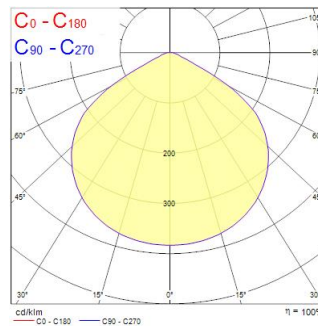
### Dimensions (mm)



### Photometrics

| Distance [m] | Cone diameter [m] | Beam diameter [m] | Beam diameter [m] | Illuminance [lx] |
|--------------|-------------------|-------------------|-------------------|------------------|
| 0.5          | 1.51              | Ø171              | Ø180              | 115              |
| 1.0          | 3.01              | Ø171              | Ø180              | 30               |
| 1.5          | 4.52              | Ø171              | Ø180              | 13               |
| 2.0          | 6.02              | Ø171              | Ø180              | 7                |
| 2.5          | 7.53              | Ø171              | Ø180              | 5                |
| 3.0          | 9.03              | Ø171              | Ø180              | 3                |

Distance [m]    Cone diameter [m]    Illuminance [lx]  
 — C0 - C180 (Half beam angle: 112.8°)



# SylSafe XSpot OA R EM3 NM MS

Item No: 0041775

**SYLVANIA**

## General data

|                     |   |
|---------------------|---|
| Product name        | SylSafe XSpot OA R EM3 NM MS                                |
| Technology          | LED   |
| Mount               | Ceiling recessed mounting                                   |
| General application | Office, Hospitality, Retail, Education, Museums & Galleries |
| ETIM Class          | EC001957  |
| Warranty            | 5 years   |

## Optical data

|                                   |      |
|-----------------------------------|------|
| Fixture luminous flux (lm)        | 80   |
| Luminaire efficacy (lm/W)         | 29   |
| Correlated colour temperature (k) | 5700 |
| CRI (Ra)                          | 70   |
| Photobiological Risk Group        | RG2  |
| Luminous flux (emergency) (lm)    | 80   |

## Electrical data

|  |          |
|--|----------|
| Emergency duration (h)                   | 3        |
| Primary Supply/Product voltage - min (V) | 220      |
| Primary Supply/Product voltage - max (V) | 240      |
| Lamp power factor                        | 0.45     |
| Electrical protection                    | Class II |
| Control gear required                    | Yes      |
| Drive current (mA)                       | 30       |
| Nominal Frequency (Hz)                   | 50/60Hz  |

## Physical data

|                             |       |
|-----------------------------|-------|
| Housing colour              | White |
| IP rating                   | IP20  |
| IK rating                   | IK03  |
| Nominal Product Length (mm) | 12    |
| Nominal Product Width (mm)  | 12    |
| Nominal Product Height (mm) | 26.5  |
| Weight (kg)                 | 0.32  |

## Packaging

|                                       |                |
|---------------------------------------|----------------|
| Product EAN number                    | 5410288417752  |
| Packaging single length / height (cm) | 21.0           |
| Packaging single width (cm)           | 9.3            |
| Packaging single depth (cm)           | 4.7            |
| DUN14 (inner)                         | 15410288417759 |
| Units per outer package               | 25             |
| Packaging outer length / height (cm)  | 42.4           |
| Packaging outer width (cm)            | 29.8           |
| Packaging outer depth (cm)            | 28.0           |