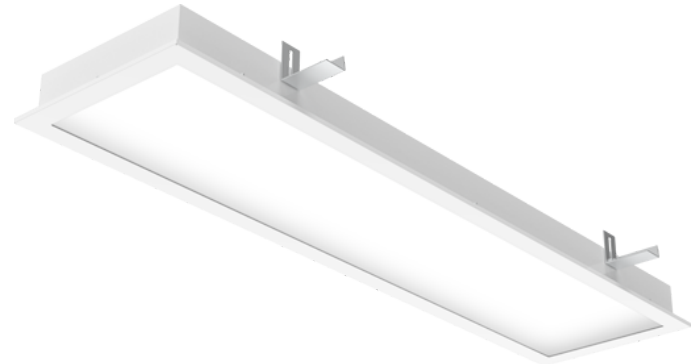


PANEL IP66 CR R 623R CMPG L3 3750LM 940

Item No: 0042013

SYLVANIA

LiteGuard™



PANEL IP66 CR R 623R CMPG L3 3750LM 940 is a recessed LED lighting fixture designed for clean areas in hospitals, laboratories, microelectronics production, food industry, clean screwless design for easy cleaning with rounded edges of the frame eliminates the sediments and bacteriums creation, powder coated steel body with white finishing (RAL9016), diffuser made of clear tempered safety glass and MP plexiglass, 1247x312x79mm luminaire dimensions, 3750lm luminous flux, 37W system power, 101lm/W efficacy, CRI Ra>90 4000K CCT light source, suitable for ambient temperatures from -20°C up to 60°C, lifespan: L80B10 70000h @Ta 30°C, L70B10 100000hr @ Ta 30°C, certified for clean areas in compliance with ISO 14644-1 class 2-9, minimum height of mounting space is 200 mm, electrical connection by means of ADELS connector, maximum cross section of wires 2,5 mm², impact protection IK08, ingress protection rating IP66/IP50 upper side of the luminaire, electrical protection Class I, non-dimmable constant current driver, 5 years warranty, UGR<19.

PANEL IP66 CR R 623R CMPG L3 3750LM 940

Item No: 0042013

SYLVANIA

Technical Assets

Photometrics

0.5	0.82 0.82	E171 E1C90 38.9° E1C90 39.2°	8279 1956 1959
1.0	1.65 1.63	E171 E1C90 38.9° E1C90 39.2°	2069 478 482
1.5	2.47 2.45	E171 E1C90 38.9° E1C90 39.2°	830 212 214
2.0	3.30 3.26	E171 E1C90 38.9° E1C90 39.2°	517 119 121
2.5	4.12 4.05	E171 E1C90 38.9° E1C90 39.2°	331 75 77
3.0	4.95 4.85	E171 E1C90 38.9° E1C90 39.2°	230 53 54

Distance [m] Cone diameter [m] Illuminance [lx]

— C0 - C180 (Half beam angle: 75.4°)
— C90 - C270 (Half beam angle: 75.0°)



General data

Product name	PANEL IP66 CR R 623R CMPG L3 3750LM 940
Technology	LED
Cap/Base	N/A
Housing	Steel
Mount	Ceiling recessed mounting
Built in presence detector	NONE
General application	Logistics & Industry
Operating temperature range (°C)	-20°C...+60°C
Virtual assistant compatibility	N/A
ETIM Class	EC002892
Warranty	5 years

Optical data

Fixture luminous flux (lm)	3750
Luminaire efficacy (lm/W)	101
Correlated colour temperature (k)	4000
Light colour	Neutral White
CRI (Ra)	90
Colour Variation Initial (SDCM)	SDCM3
Beam Angle (°)	90
Distribution type	Symmetric
Glare control	< 19
Photobiological Risk Group	RG0

PANEL IP66 CR R 623R CMPG L3 3750LM 940

Item No: 0042013

SYLVANIA

Electrical data

Emergency type	
Total power consumption (W)	37
Primary Supply/Product voltage - min (V)	240.0
Primary Supply/Product voltage - max (V)	220.0
Lamp power factor	0.98
THD (at 230 V, 50 Hz, full load, at 100% dimming level) ≤ xx.x %	15
Electrical protection	Class I
Control gear type	LED driver constant current
Dimmable	No
Dimming method	N/A
Inrush Current (A)	23
Inrush Duration (µs)	140
Energy Efficiency Class (A->G) of contained light source	C
Nominal Frequency (Hz)	50/60Hz
Max. products per 10A C Breaker	39
Max. products per 16A C Breaker	64
Max. products per 16A B Breaker	38
Connectable conductor cross section - Min (mm ²)	0.5
Connectable conductor cross section - Max (mm ²)	2.5

Lifetime data

Lifespan L70 B50 | 100000

Physical data

Housing colour	RAL 9016 - Traffic white / Bezel
IP rating	IP66
IK rating	IK08
Diffuser finish	Prismatic
Diffuser material	Safety tempered glass
Nominal Product Length (mm)	1247
Nominal Product Width (mm)	312
Nominal Product Height (mm)	79
Weight (kg)	12.0

Packaging

Product EAN number	5410288420134
Packaging single length / height (cm)	127.5
Packaging single width (cm)	34.0
Packaging single depth (cm)	9.5
DUN14 (inner)	05410288420134
Units per outer package	1
Packaging outer length / height (cm)	127.5
Packaging outer width (cm)	34.0
Packaging outer depth (cm)	9.5

Safety data

Glow Wire Test (°C)	850
Optimal operating condition (°C)	-20-60