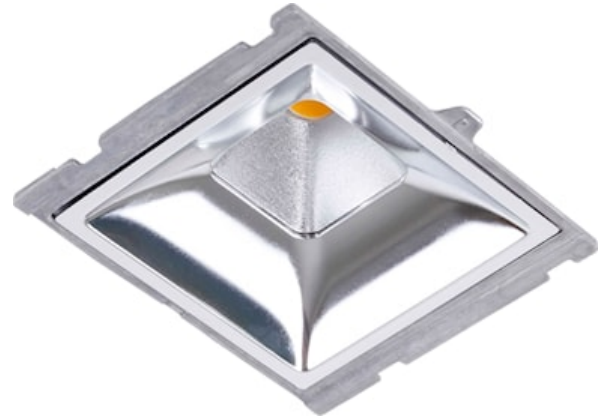


# MYRIAD SQUARE HOUS SPOT 2.7K PHDIM SILVER REFL

Item No: 2057933

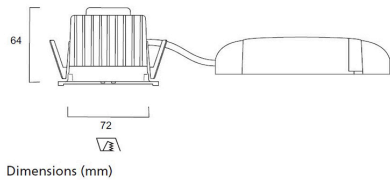
Concord



MYRIAD SQUARE HOUSING SPOT 2700K PHASE DIM SILVER REFLECTOR COLOR

## Technical Assets

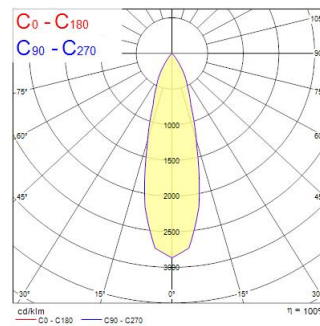
### Dimensions (mm)



### Photometrics

| Distance [m] | Cone diameter [m] | Beam diameter [m] | Beam angle [°] | Illuminance [lx] |
|--------------|-------------------|-------------------|----------------|------------------|
| 0.5          | 0.26              | 0.26              | 14.4°          | 991<br>457       |
| 1.0          | 0.51              | 0.51              | 14.4°          | 247<br>112       |
| 1.5          | 0.77              | 0.77              | 14.4°          | 100<br>50        |
| 2.0          | 1.03              | 1.03              | 14.4°          | 59<br>29         |
| 2.5          | 1.28              | 1.28              | 14.4°          | 36<br>18         |
| 3.0          | 1.54              | 1.54              | 14.4°          | 27<br>13         |

Distance [m] Cone diameter [m] Illuminance [lx]  
C0 - C180 (Half beam angle: 28.8°)



# MYRIAD SQUARE HOUS SPOT 2.7K PHDIM SILVER REFL

Item No: 2057933

## Concord

### General data

|   |   |
|---|---|
| Product name                            | MYRIAD SQUARE HOUS<br>SPOT 2.7K PHDIM<br>SILVER REFL      |
| Technology                              | LED   |
| Environment                             | Interior  |
| General application                     | Hospitality, Office,<br>Residential & Consumer,<br>Retail |
| Performance ambient temperature Tq (°C) | 25  |
| ETIM Class                              | EC001744  |
| Warranty                                | 5 years   |

### Optical data

|                                   |             |
|-----------------------------------|-------------|
| Fixture luminous flux (lm)        | 864         |
| Luminaire efficacy (lm/W)         | 86          |
| LOR (%)                           | 100         |
| Correlated colour temperature (k) | 2700        |
| Light colour                      | Candlelight |
| CRI (Ra)                          | 85          |
| Colour Variation Initial (SDCM)   | SDCM3       |
| Adjustable chromaticity           | N           |
| Beam Angle (°)                    | 25          |
| Photobiological Risk Group        | RG1         |

### Electrical data

|  |          |
|--|----------|
| Total power consumption (W)                              | 10       |
| Electrical protection                                    | Class II |
| Dimming method   | Other    |
| Drive current (mA)                                       | 250      |
| Energy Efficiency Class (A->G) of contained light source | E        |
| Nominal Frequency (Hz)                                   | 50/60Hz  |

### Lifetime data

|                  |        |
|------------------|--------|
| Lifespan L70 B50 | 100000 |
| Lifespan L80 B20 | 100000 |
| Lifespan L90 B10 | 68500  |

### Physical data

|                             |         |
|-----------------------------|---------|
| IP rating                   | IP44/20 |
| IK rating                   | IK02    |
| Nominal Product Length (mm) | 69      |
| Nominal Product Width (mm)  | 72      |
| Nominal Product Height (mm) | 64      |
| Max. Lamp Diameter (mm) - D | 90      |
| Weight (kg)                 | 0.815   |
| Recessed Depth (mm)         | 64      |

### Packaging

|                                       |                |
|---------------------------------------|----------------|
| Product EAN number                    | 5025768579334  |
| Packaging single length / height (cm) | 17.5           |
| Packaging single width (cm)           | 15.0           |
| Packaging single depth (cm)           | 17.5           |
| DUN14 (inner)                         | 05025768579334 |
| Units per outer package               | 1              |
| Packaging outer length / height (cm)  | 17.5           |
| Packaging outer width (cm)            | 15.0           |
| Packaging outer depth (cm)            | 17.5           |