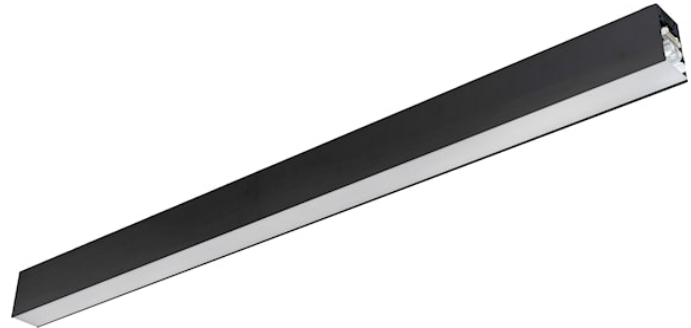


CONTINUUM PLUS 1.8 940 CO OPAL DI DALI B

Item No: 2064732

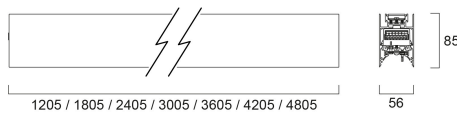
Concord



CONTINUUM PLUS 1.8 940 CO OPAL DI DALI B is a linear luminaire with trimless body for suspended mounting, various mounting accessories, direct/indirect light distribution (60/40 ratio), compact and minimalist design, ideal for offices, meeting rooms, corridors, education facilities, museums and libraries, black (RAL9005) finishing, extruded aluminium body, 1805x56x85mm dimensions, opal diffuser, 4000K (neutral white) colour temperature, total system power: 54W, total fixture output: 7650lm, luminaire efficacy: 142lm/W, colour rendering: Ra >90, LED Chromacity: 3 step MacAdam ellipse, lifespan: 89,000 hours L80B50, operating voltage: 220-240V / 50-60Hz, drive current: 1275mA, electronic driver, DALI dimmable, direct/indirect independently addressable, Class I electrical protection, IP20, IK03, suitable for internal environment only. The product is delivered without diffuser, end cap, suspension or power supply kit, the accessories eg rolled diffuser (2064605) to be ordered separately.

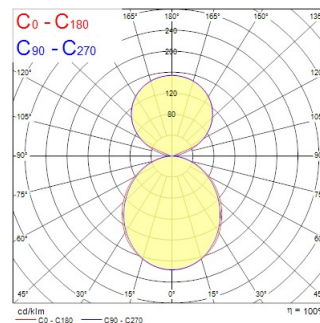
Technical Assets

Dimensions (mm)



Photometrics

Distance [m]	Cone diameter [m]	Beam diameter [m]	Beam diameter [m]	Illuminance [lx]
0.5	1.23	0.07	0.07	6519
	1.31	E100	E100	500
1.0	2.45	0.14	0.14	1605
	2.62	E100	E100	210
1.5	3.68	0.21	0.21	766
	3.92	E100	E100	85
2.0	4.90	0.28	0.28	414
	5.23	E100	E100	48
2.5	6.13	0.35	0.35	269
	6.54	E100	E100	34
3.0	7.36	0.42	0.42	194
	7.85	E100	E100	21



CONTINUUM PLUS 1.8 940 CO OPAL DI DALI B

Item No: 2064732

Concord

General data

Product name	CONTINUUM PLUS 1.8 940 CO OPAL DI DALI B
Technology	LED
Cap/Base	N/A
Housing	Aluminium
Mount	Suspended
Built in presence detector	NONE
Fixture rating	Enclosed
General application	Office, Education, Retail
Operating temperature range (°C)	1°C...+25°C
Virtual assistant compatibility	N/A
ETIM Class	EC002892
Warranty	5 years

Optical data

Fixture luminous flux (lm)	7650
Luminaire efficacy (lm/W)	142
Correlated colour temperature (k)	4000
Light colour	Neutral White
CRI (Ra)	90
Colour Variation Initial (SDCM)	SDCM3
Distribution type	Symmetric
Glare control	< 25
Photobiological Risk Group	RG1

Electrical data

Emergency type	
Total power consumption (W)	54
Primary Supply/Product voltage - min (V)	220.0
Primary Supply/Product voltage - max (V)	240.0
Lamp power factor	0.98
THD (at 230 V, 50 Hz, full load, at 100% dimming level) ≤ xx.x %	10
Electrical protection	Class I
Control gear required	No
Control gear type	LED driver constant current
Dimmable	Yes
Dimming method	DALI-2
Minimum dimming level (%)	1
Drive current (mA)	1275
Inrush Current (A)	35
Inrush Duration (µs)	170
Energy Efficiency Class (A->G) of contained light source	C, B(more than 1 Light Source)
Nominal Frequency (Hz)	50/60Hz
LED Flickering Rate	Ultra low (5% or less)
Max. products per 10A C Breaker	30
Max. products per 13A C Breaker	38
Max. products per 16A C Breaker	46
Max. products per 20A C Breaker	58
Max. products per 10A B Breaker	18
Max. products per 13A B Breaker	23
Max. products per 16A B Breaker	28
Max. products per 20A B Breaker	35
Connectable conductor cross section - Min (mm ²)	0.75
Connectable conductor cross section - Max (mm ²)	1.5

CONTINUUM PLUS 1.8 940 CO OPAL DI DALI B

Item No: 2064732

Concord

Lifetime data

Lifespan L70 B50	100000
Lifespan L80 B50	89000

Physical data

Housing colour	RAL 9005 - Jet black
IP rating	IP20
IK rating	IK03
Diffuser finish	Opal
Diffuser material	PC Polycarbonate
Reflector finish	Not Applicable
Nominal Product Length (mm)	1805
Nominal Product Width (mm)	56
Nominal Product Height (mm)	85
Weight (kg)	4.8

Packaging

Product EAN number	5025768647323
Packaging single length / height (cm)	191.0
Packaging single width (cm)	11.7
Packaging single depth (cm)	14.7
DUN14 (inner)	05025768647323
Units per outer package	1
Packaging outer length / height (cm)	191.0
Packaging outer width (cm)	11.7
Packaging outer depth (cm)	14.7

Safety data

Glow Wire Test (°C)	650
Optimal operating condition (°C)	1-25