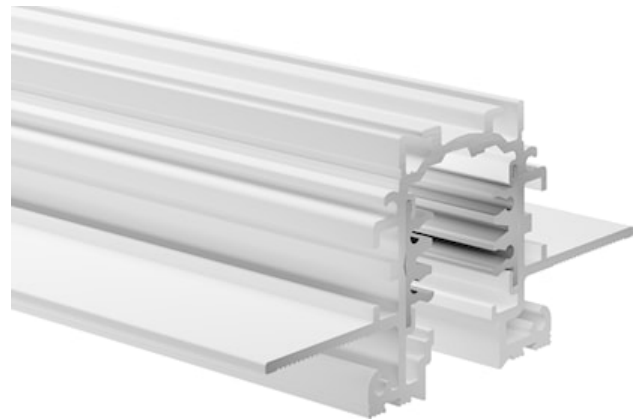


# Lytespan Trimless Recessed 2m White 9000-2/w-tr

Item No: 2070247

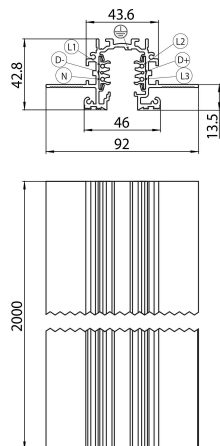
Concord



Lytespan Trimless Recessed - 3 circuit track + 2 circuit control L1/L2/L3/Neutral/ground 16A/440V + D+/D- 2x1A/50V FELV AC, DALI, DMX, 1-10V etc. compatible, circuits can be controlled individually, aluminum body, suitable for trimless recessed installation, 2000 x 92 x 42.8 mm (L x W x H), white (RAL 9010). Please check compatible Adaptor list.

## Technical Assets

### Dimensions (mm)



### Photometrics

# Lytespan Trimless Recessed 2m White 9000-2/w-tr

Item No: 2070247

## Concord

### General data

Product name	Lytespan Trimless Recessed 2m White 9000-2/w-tr
Technology	Non - Electrical Device
Accessory type	Electrical
Type of accessory	Track
Housing	Aluminium
Mount	Ceiling recessed mounting, Wall recessed
General application	Hospitality, Museums & Galleries, Office
ETIM Class	EC000101
Warranty	5 years

### Electrical data

Primary Supply/Product voltage - min (V)	220.0
Primary Supply/Product voltage - max (V)	240.0
Electrical protection	Class I

### Physical data

Housing colour	White
Nominal Product Length (mm)	2000
Nominal Product Width (mm)	92
Nominal Product Height (mm)	42.8
Weight (kg)	3.5

### Packaging

Product EAN number	5025768702473
Packaging single length / height (cm)	206.0
Packaging single width (cm)	6.2
Packaging single depth (cm)	6.2
DUN14 (inner)	05025768702473
Units per outer package	1
Packaging outer length / height (cm)	206.0
Packaging outer width (cm)	6.2
Packaging outer depth (cm)	6.2