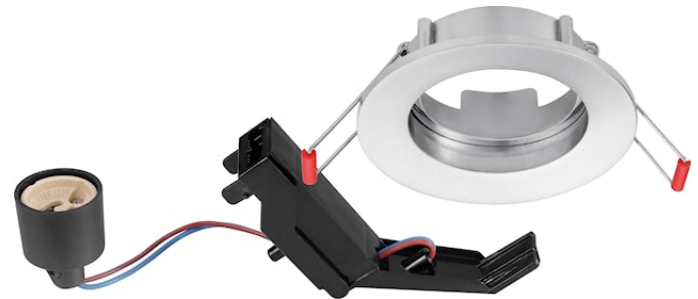


INSET TREND 62 FL ES50 BN EX-LMP

Item No: 3083560

SYLVANIA

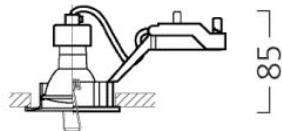
PROTM



62mm cut out. Fixed. Round bezel. Brushed Nickel

Technical Assets

Dimensions (mm)



┌ 62 ─┐

┌ 78 ─┐

62 Flush
minimum recess dimensions:
200x200x85mm

Photometrics

INSET TREND 62 FL ES50 BN EX-LMP

Item No: 3083560

SYLVANIA

General data

| | |
|---------------------------------|--|
| Product name | INSET TREND 62 FL ES50 BN EX-LMP |
| Technology | Light Source Not Integrated |
| Cap/Base | GU10 |
| Housing | Aluminium |
| Mount | Ceiling recessed mounting |
| Built in presence detector | NONE |
| Environment | Indoor |
| General application | Hospitality, Residential & Consumer |
| Virtual assistant compatibility | N/A |
| ETIM Class | EC001744 |
| E-number SE | 7464260 |
| Warranty | 3 years |

Optical data

| | |
|-------------------------|-------------------|
| LOR (%) | Dependent on lamp |
| Light colour | N/A |
| Adjustable chromaticity | N |

Electrical data

| | |
|---|--------------------------------|
| Light source included | Fixture without Lightsource |
| Primary Supply/Product voltage - min (V) | 230 |
| Primary Supply/Product voltage - max (V) | 240 |
| Electrical protection | Class II |
| Nominal Frequency (Hz) | 50/60Hz |

Physical data

| | |
|-----------------------------|--------|
| Housing colour | Nickel |
| IP rating | IP20 |
| IK rating | IK02 |
| Nominal Product Length (mm) | 82 |
| Nominal Product Width (mm) | 82 |
| Nominal Product Height (mm) | 85 |
| Weight (kg) | 0.104 |
| Recessed Depth (mm) | 85 |

Packaging

| | |
|---------------------------------------|----------------|
| Product EAN number | 8711971835608 |
| Packaging single length / height (cm) | 13.3 |
| Packaging single width (cm) | 10.17 |
| Packaging single depth (cm) | 7.0 |
| DUN14 (inner) | 18711971835605 |
| Units per outer package | 30 |
| Packaging outer length / height (cm) | 24.1 |
| Packaging outer width (cm) | 29.0 |
| Packaging outer depth (cm) | 53.4 |