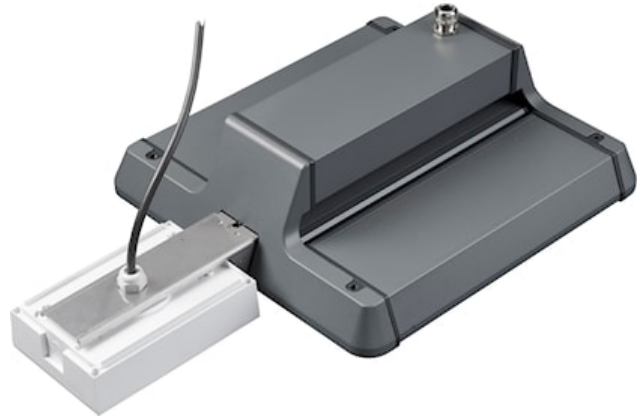


# Sylbay Gen II EM Kit Standard

Item No: 0040027



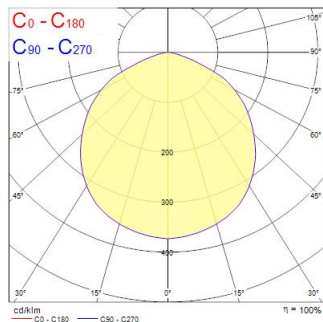
Sylbay Gen II EM Kit Standard provides a simple conversion of High Bay fitting with a high performance self-contained LED emergency luminaire KIT suitable for open areas, delivering 3 hours rated emergency output. Self testing with DALI monitoring capability. Supplied with all mounting accessories

## Technical Assets

### Photometrics

Distance [m]	Cone diameter [m]	Beam diameter [m]	Beam angle [°]	Illuminance [lx]
0.5	1.45	0.07	88.4°	299
1.0	2.90	0.14	88.4°	75
1.5	4.35	0.21	88.4°	33
2.0	5.80	0.28	88.4°	19
2.5	7.25	0.35	88.4°	12
3.0	8.70	0.42	88.4°	8

Distance [m]    Cone diameter [m]    Beam diameter [m]    Beam angle [°]    Illuminance [lx]  
 C0 - C180 (Half beam angle: 110.8°)



# Sylbay Gen II EM Kit Standard

Item No: 0040027

**SYLVANIA**

## General data

Product name	Sylbay Gen II EM Kit Standard
Technology	Emergency Pack
General application	Logistics & Industry
ETIM Class	EC002472
Warranty	3 years

## Optical data

Fixture luminous flux (lm)	200
CRI (Ra)	75
Photobiological Risk Group	RG1
Luminous flux (emergency) (lm)	200

## Electrical data

Emergency duration (h)	3
Primary Supply/Product voltage - min (V)	220
Primary Supply/Product voltage - max (V)	240
Lamp power factor	0.44
Electrical protection	Class II

## Physical data

Housing colour	White
IP rating	IP65
IK rating	IK03
Weight (kg)	1.1

## Packaging

Product EAN number	5410288400273
Packaging single length / height (cm)	32.5
Packaging single width (cm)	32.5
Packaging single depth (cm)	12.5
DUN14 (inner)	05410288400273
Units per outer package	1
Packaging outer length / height (cm)	32.5
Packaging outer width (cm)	32.5
Packaging outer depth (cm)	12.5