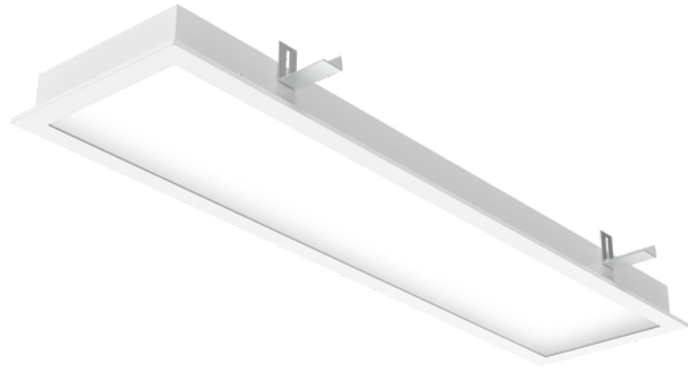


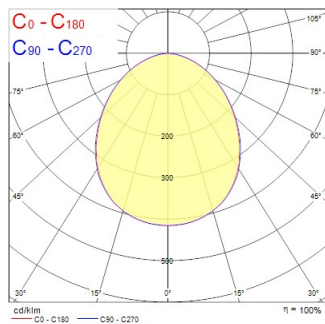
## LiteGuard™



0.5	1.13	E(0°)	5296
	1.12	E(C90) 45°	1203
1.0	2.27	E(0°)	2074
	2.24	E(C90) 45°	351
1.5	3.40	E(0°)	92
	3.37	E(C90) 45°	151
2.0	4.54	E(0°)	510
	4.49	E(C90) 45°	75
2.5	5.67	E(0°)	320
	5.61	E(C90) 45°	48
3.0	6.81	E(0°)	230
	6.73	E(C90) 45°	33

Distance [m]      Cone diameter [m]      Illuminance [lx]

— C0 - C180 (Half beam angle: 90.0°)  
— C90 - C270 (Half beam angle: 97.2°)






---