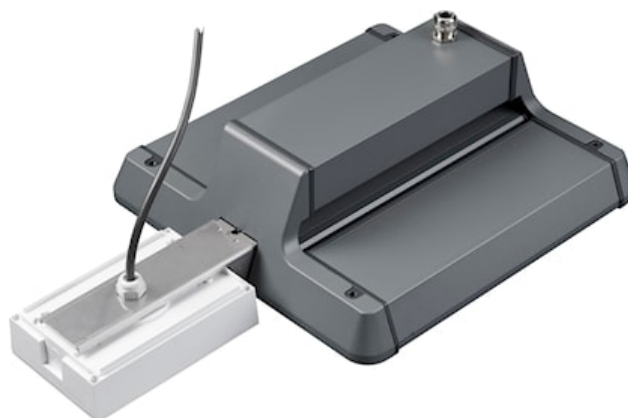


# Sylbay Gen II EM Kit Standard

Code article 0040027

**SYLVANIA**



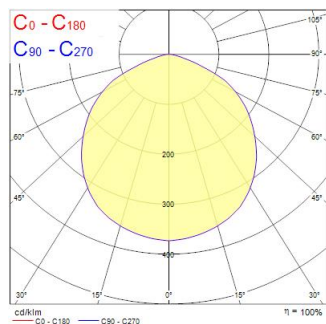
Sylbay Gen II EM Kit Standard provides a simple conversion of High Bay fitting with a high performance self-contained LED emergency luminaire KIT suitable for open areas, delivering 3 hours rated emergency output. Self testing with DALI monitoring capability. Supplied with all mounting accessories

## Atouts techniques

### Photométrie

Distance [m]	Cone diameter [m]	Beam angle [°]	Illuminance [lx]
0.5	1.45	80°	296
1.0	2.90	80°	74
1.5	4.35	80°	33
2.0	5.80	80°	19
2.5	7.25	80°	12
3.0	8.70	80°	8

Distance [m] Cone diameter [m] Illuminance [lx]  
C0 - C180 (Half beam angle: 110.8°)



# Sylbay Gen II EM Kit Standard

Code article 0040027

**SYLVANIA**

## Données générales

Nom du produit	Sylbay Gen II EM Kit Standard
Technologie	Emergency Pack
General application	Logistics & Industry
ETIM Class	EC002472
Warranty	3 ans

## Données optiques

Fixture luminous flux (lm)	200
IRC (Ra)	75
Photobiological Risk Group	RG1
Luminous flux (emergency) (lm)	200

## Caractéristiques électriques

Emergency duration (h)	3
Primary Supply/Product voltage - min (V)	220
Primary Supply/Product voltage - max (V)	240
Lamp power factor	0.44
Electrical protection	Class II

## Données physiques

Housing colour	White
IP rating	IP65
IK rating	IK03
Poids (kg)	1.1

## Emballage

Product EAN number	5410288400273
Longueur simple de l'emballage (cm)	32.5
Largeur simple de l'emballage (cm)	32.5
Packaging single depth (cm)	12.5
DUN14 (inner)	05410288400273
Units per outer package	1
Packaging outer length / height (cm)	32.5
Packaging outer width (cm)	32.5
Packaging outer depth (cm)	12.5