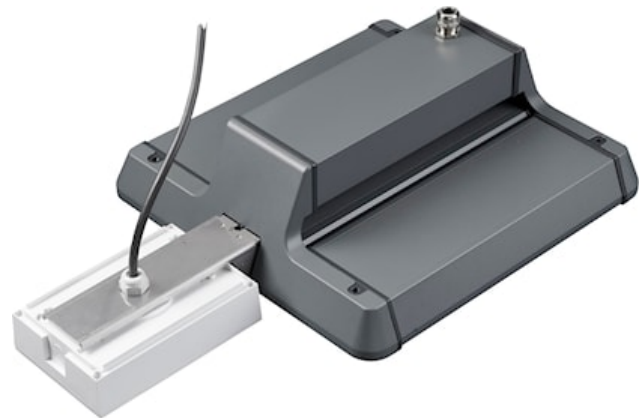


SYLBAY GEN II EM KIT ESCAPE ROUTE

Code article 0040030

SYLVANIA



Sylbay Gen II EM Kit Escape Route provides a simple conversion of High Bay fitting with a high performance self-contained LED emergency luminaire KIT suitable for escape routes, delivering 3 hours rated emergency output. Self testing with DALI monitoring capability. Supplied with all mounting accessories

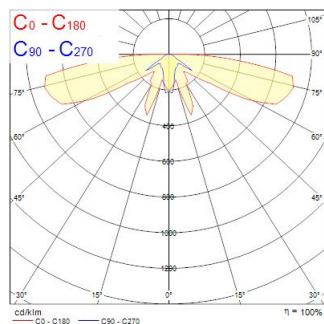
Atouts techniques

Photométrie

| Distance [m] | Cone diameter [m] | Beam diameter [m] | Beam diameter [m] | Illuminance [lx] |
|--------------|-------------------|-------------------|-------------------|------------------|
| 0.5 | 1.55 12.14 | 0.07 | 0.07 | 180 |
| | | 0.14 | 0.14 | 45 |
| | | 0.21 | 0.21 | 30 |
| 1.0 | 3.10 24.33 | 0.14 | 0.14 | 180 |
| | | 0.28 | 0.28 | 45 |
| | | 0.42 | 0.42 | 30 |
| 1.5 | 4.65 36.49 | 0.21 | 0.21 | 180 |
| | | 0.42 | 0.42 | 45 |
| | | 0.63 | 0.63 | 30 |
| 2.0 | 6.21 48.65 | 0.28 | 0.28 | 180 |
| | | 0.56 | 0.56 | 45 |
| | | 0.84 | 0.84 | 30 |
| 2.5 | 7.76 60.82 | 0.35 | 0.35 | 180 |
| | | 0.70 | 0.70 | 45 |
| | | 1.05 | 1.05 | 30 |
| 3.0 | 9.31 72.99 | 0.42 | 0.42 | 180 |
| | | 0.84 | 0.84 | 45 |
| | | 1.26 | 1.26 | 30 |

Distance [m] Cone diameter [m] Illuminance [lx]

— C0 - C180 (Half beam angle: 170.6°)
— C90 - C270 (Half beam angle: 114.4°)



SYLBAY GEN II EM KIT ESCAPE ROUTE

Code article 0040030

SYLVANIA

Données générales

| | |
|---------------------|-----------------------------------|
| Nom du produit | SYLBAY GEN II EM KIT ESCAPE ROUTE |
| Technologie | LED |
| General application | Logistics & Industry |
| ETIM Class | EC002556 |
| Warranty | 3 ans |

Données optiques

| | |
|--------------------------------|-----|
| Fixture luminous flux (lm) | 217 |
| IRC (Ra) | 75 |
| Photobiological Risk Group | RG1 |
| Luminous flux (emergency) (lm) | 200 |

Caractéristiques électriques

| | |
|------------------------|----------|
| Emergency duration (h) | 3 |
| Lamp power factor | 0.44 |
| Electrical protection | Class II |

Données physiques

| | |
|----------------|-------|
| Housing colour | White |
| IP rating | IP65 |
| IK rating | IK03 |
| Poids (kg) | 1.1 |

Emballage

| | |
|--------------------------------------|----------------|
| Product EAN number | 5410288400303 |
| Longueur simple de l'emballage (cm) | 32.5 |
| Largeur simple de l'emballage (cm) | 32.5 |
| Packaging single depth (cm) | 12.5 |
| DUN14 (inner) | 05410288400303 |
| Units per outer package | 1 |
| Packaging outer length / height (cm) | 32.5 |
| Packaging outer width (cm) | 32.5 |
| Packaging outer depth (cm) | 12.5 |