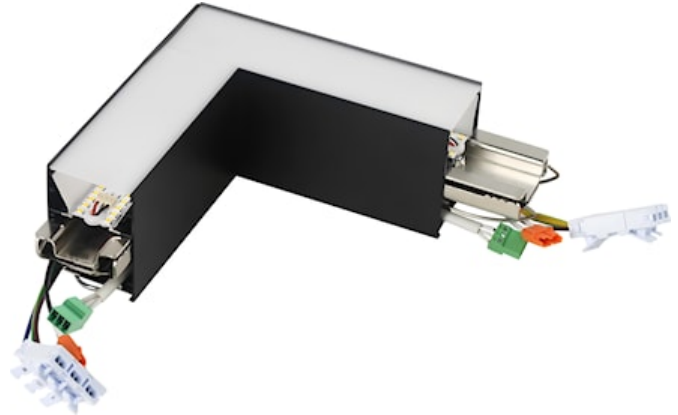


OTAO LINEAR CORN-L OPAL 830/840 BK

Code article 0040809

SYLVANIA

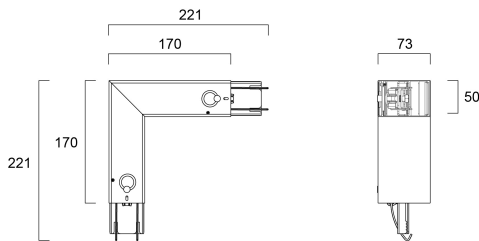
PROTM



L-shape connection unit for opal diffuser version of Otao Linear range, RAL9011 (black) finishing, direct distribution, only 3000K/4000K LED light sources included, feed by next straight luminaire, shipped with 2x fast connectors and additional replacement electrical connectors, 50mm wide extruded aluminium profile, nominal size: 170x170x50x73mm.

Atouts techniques

Dimensions (mm)



Photométrie

OTAO LINEAR CORN-L OPAL 830/840 BK

Code article 0040809

SYLVANIA

Données générales

Nom du produit	OTAO LINEAR CORN-L OPAL 830/840 BK
Technologie	LED
Cap/Base	N/A
Housing	Aluminium
Montage	Ceiling surface mounting, Suspended
Built in presence detector	NONE
General application	Office, Education, Retail, Hospitality
Operating temperature range (°C)	5°C...+50°C
Virtual assistant compatibility	N/A
ETIM Class	EC002556
Numéro virtuel FI	4170663
Warranty	5 ans

Données optiques

Fixture luminous flux (lm)	620
Luminaire efficacy (lm/W)	117
Couleur de lumière	Warm White or Neutral White
IRC (Ra)	80
Colour Variation Initial (SDCM)	SDCM3
Beam Angle (°)	110
Distribution type	Symmetric
Glare control	< 28
Photobiological Risk Group	RG0

Caractéristiques électriques

Emergency type	
Consommation électrique totale (W)	5.3
Primary Supply/Product voltage - min (V)	30.0
Primary Supply/Product voltage - max (V)	38.0
Electrical protection	Class III
Control gear required	No
Dimmable	No
Dimming method	N/A
Energy Efficiency Class (A->G) of contained light source	C, C(more than 1 Light Source)
Nominal Frequency (Hz)	DC

Durée de vie

Lifespan L70 B50	100000
Lifespan L80 B50	100000

Données physiques

Housing colour	RAL 9011 - Graphite black
IP rating	IP20
IK rating	IK03
Diffuser finish	Opal
Diffuser material	PC Polycarbonate
Finition réflecteur	Not Applicable
Longueur (mm)	170
Largeur (mm)	50
Nominal Product Height (mm)	73
Poids (kg)	0.75

OTAO LINEAR CORN-L OPAL 830/840 BK

Code article 0040809

SYLVANIA

Emballage

Product EAN number	5410288408095
Longueur simple de l'emballage (cm)	23.0
Largeur simple de l'emballage (cm)	8.0
Packaging single depth (cm)	23.0
DUN14 (inner)	15410288408092
Units per outer package	5
Packaging outer length / height (cm)	25.0
Packaging outer width (cm)	25.0
Packaging outer depth (cm)	42.0

Sécurité

Glow Wire Test (°C)	650
Condition de fonctionnement optimal (° C)	5-50