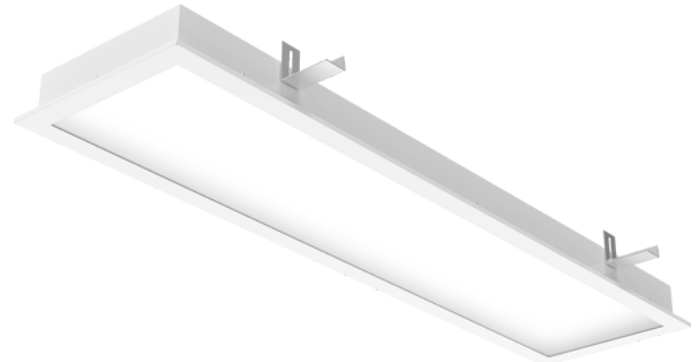


PANEL IP66 CR R 598R CMPG L3 4290LM 840 DALI EM

Code article 0042779

SYLVANIA

LiteGuard™



PANEL IP66 CR R 598R CMPG L3 4290LM 840 DALI EM is a recessed LED lighting fixture designed for clean areas in hospitals, laboratories, microelectronics production, food industry, clean screwless design for easy cleaning with rounded edges of the frame eliminates the sediments and bacteriums creation, powder coated steel body with white finishing (RAL9016), diffuser made of clear tempered safety glass and MP plexiglass, 1247x312x79mm luminaire dimensions, 4290lm luminous flux, 37W system power, 116lm/W efficacy, power consumption in EM mode 3.8W & 400lm luminous flux, CRI Ra>80 4000K CCT light source, suitable for ambient temperatures from -20°C up to 60°C, lifespan: L80B10 70000h @Ta 30°C, L70B10 100000hr @ Ta 30°C, certified for clean areas in compliance with ISO 14644-1 class 2-9, minimum height of mounting space is 200 mm, electrical connection by means of ADELS connector, maximum cross section of wires 2,5 mm², impact protection IK08, ingress protection rating IP66/IP50 upper side of the luminaire, electrical protection Class I, DALI dimmable driver, 3-hours integrated EM, 5 years warranty, UGR<19.

PANEL IP66 CR R 598R CMPG L3 4290LM 840 DALI EM

Code article 0042779

SYLVANIA

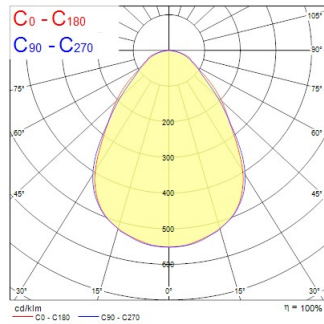
Atouts techniques

Photométrie

0.5	0.82 0.82	E171 E180 E190	8472 2181 2209
1.0	1.65 1.63	E171 E180 E190	2088 548 562
1.5	2.47 2.45	E171 E180 E190	1000 242 232
2.0	3.30 3.26	E171 E180 E190	690 136 130
2.5	4.12 4.06	E171 E180 E190	379 67 64
3.0	4.95 4.86	E171 E180 E190	283 41 39

Distance [m] Cone diameter [m] Illuminance [lx]

— C0 - C180 (Half beam angle: 75.4°)
— C90 - C270 (Half beam angle: 75.0°)



Données générales

Nom du produit	PANEL IP66 CR R 598R CMPG L3 4290LM 840 DALI EM
Technologie	LED
Cap/Base	N/A
Housing	Steel
Montage	Ceiling recessed mounting
Built in presence detector	NONE
General application	Logistics & Industry
Operating temperature range (°C)	5°C...+35°C
Virtual assistant compatibility	N/A
ETIM Class	EC002892
Warranty	5 ans

Données optiques

Fixture luminous flux (lm)	4290
Luminaire efficacy (lm/W)	116
Température de couleur (K)	4000
Couleur de lumière	Neutral White
IRC (Ra)	80
Colour Variation Initial (SDCM)	SDCM3
Beam Angle (°)	90
Distribution type	Symmetric
Glare control	< 19
Photobiological Risk Group	RG0
Luminous flux (emergency) (lm)	400

PANEL IP66 CR R 598R CMPG L3 4290LM 840 DALI EM

Code article 0042779

SYLVANIA

Caractéristiques électriques

Emergency type	
Emergency duration (h)	3
Consommation électrique totale (W)	37
Primary Supply/Product voltage - min (V)	240.0
Primary Supply/Product voltage - max (V)	220.0
Lamp power factor	0.98
THD (at 230 V, 50 Hz, full load, at 100% dimming level) ≤ xx.x %	9
Electrical protection	Class I
Type d'appareillage	LED driver constant current
Dimmable	Yes
Dimming method	DALI-2
Courant d'appel (A)	22.4
Inrush Duration (µs)	176
Energy Efficiency Class (A->G) of contained light source	B
Nominal Frequency (Hz)	50/60Hz
Max. products per 10A C Breaker	21
Max. products per 16A C Breaker	36
Max. products per 16A B Breaker	22
Connectable conductor cross section - Min (mm ²)	0.5
Connectable conductor cross section - Max (mm ²)	2.5

Données physiques

Housing colour	RAL 9016 - Traffic white / Bezel
IP rating	IP66
IK rating	IK08
Diffuser finish	Prismatic
Diffuser material	Safety tempered glass
Longueur (mm)	1247
Largeur (mm)	312
Nominal Product Height (mm)	79
Poids (kg)	12.0

Emballage

Product EAN number	5410288427799
Longueur simple de l'emballage (cm)	127.5
Largeur simple de l'emballage (cm)	34.0
Packaging single depth (cm)	9.5
DUN14 (inner)	05410288427799
Units per outer package	1
Packaging outer length / height (cm)	127.5
Packaging outer width (cm)	34.0
Packaging outer depth (cm)	9.5

Sécurité

Glow Wire Test (°C)	850
Condition de fonctionnement optimal (°C)	5-35

Durée de vie

Lifespan L70 B50

100000