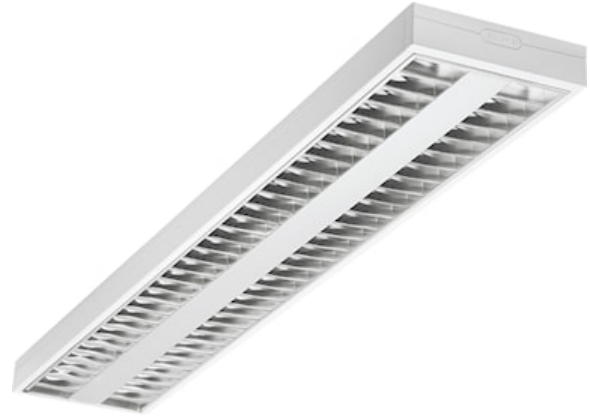
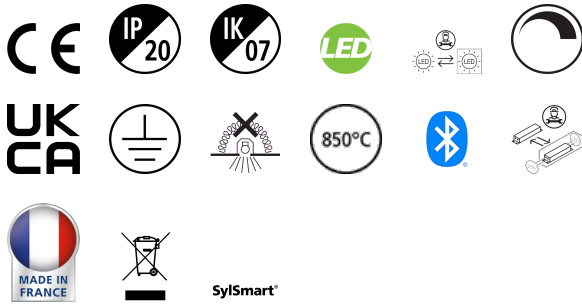


RANA NEO 6800LM S 1200 830 SSC 2L WHITE

Code article 0054238

SYLVANIA

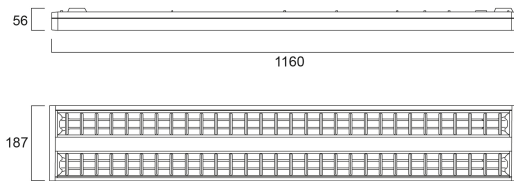
PROTM



Surface or Suspended LED luminaire with Micro Prismatic Optic, Direct Light Distribution, Luminaire Dimensions: 1160x187x56mm, White body colour, IP20, IK07, SylSmart Standalone capable, Low LED flicker (+/-5%), Warm White (3000K) LED Colour Temperature, 6800lm, 58W, 117lm/W efficacy, CRI>80, 3 SDCM (3-step MacAdam ellipse) LED Colour Consistency, UGR<18, Luminance at 65° < 3000 cd/m2, Lifespan: 96,000 hours L80B20, Quick electrical connection with push-connectors in the luminaire, Glow Wire Test 850°C.

Atouts techniques

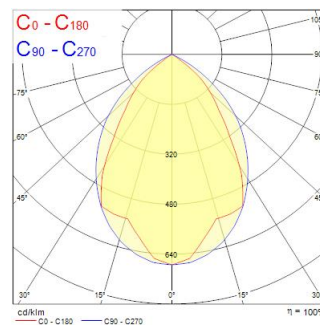
Dimensions (mm)



Photométrie

Distance [m]	Cone diameter [m]	E107	E190	E270	E340	ILLUMINANCE [lx]
0.5	0.90 0.66	1470	413°	3910	34.4°	6209
1.0	1.79 1.37	4610	413°	980	34.4°	1952
1.5	2.68 2.05	2082	413°	424	34.4°	679
2.0	3.59 2.74	1154	413°	239	34.4°	358
2.5	4.49 3.42	739	413°	165	34.4°	258
3.0	5.38 4.11	512	413°	128	34.4°	185

Distance [m] Cone diameter [m] Illuminance [lx]
 — C0 - C180 (Half beam angle: 60.9°)
 — C90 - C270 (Half beam angle: 63.9°)



RANA NEO 6800LM S 1200 830 SSC 2L WHITE

Code article 0054238

SYLVANIA

Données générales

Nom du produit	RANA NEO 6800LM S 1200 830 SSC 2L WHITE
Technologie	LED
Cap/Base	N/A
Housing	Steel
Montage	Ceiling surface mounting, Suspended
Built in presence detector	NONE
General application	Office, Education
Operating temperature range (°C)	-5°C...+25°C
Performance ambient temperature Tq (°C)	25
Virtual assistant compatibility	N/A
ETIM Class	EC002892
Warranty	5 ans

Données optiques

Fixture luminous flux (lm)	6800
Luminaire efficacy (lm/W)	117
Température de couleur (K)	3000
Couleur de lumière	Warm White
IRC (Ra)	80
Colour Variation Initial (SDCM)	SDCM3
Distribution type	Symmetric
Glare control	< 19
Photobiological Risk Group	RG0

Caractéristiques électriques

Emergency type	
Consommation électrique totale (W)	58
Primary Supply/Product voltage - min (V)	220.0
Primary Supply/Product voltage - max (V)	240.0
Lamp power factor	0.99
THD (at 230 V, 50 Hz, full load, at 100% dimming level) ≤ xx.x %	9
Electrical protection	Class I
Control gear required	No
Type d'appareillage	LED driver constant current
Dimmable	Yes
Dimming method	SylSmart Standalone (SSC)
Minimum dimming level (%)	1
Drive current (mA)	300
Courant d'appel (A)	23
Inrush Duration (µs)	174
Energy Efficiency Class (A->G) of contained light source	C
Nominal Frequency (Hz)	50/60Hz
LED Flickering Rate	Ultra low (5% or less)
Max. products per 10A C Breaker	21
Max. products per 13A C Breaker	28
Max. products per 16A C Breaker	36
Max. products per 20A C Breaker	45
Max. products per 10A B Breaker	13
Max. products per 13A B Breaker	17
Max. products per 16A B Breaker	22
Max. products per 20A B Breaker	27
Connectable conductor cross section - Min (mm ²)	0.75
Connectable conductor cross section - Max (mm ²)	2.5

RANA NEO 6800LM S 1200 830 SSC 2L WHITE

Code article 0054238

SYLVANIA

Durée de vie

Lifespan L70 B50	100000
Lifespan L80 B20	96000

Données physiques

Housing colour	RAL 9016 - Traffic white / Bezel
IP rating	IP20
IK rating	IK07
Diffuser finish	Opal
Diffuser material	PC Polycarbonate
Finition réflecteur	Not Applicable
Longueur (mm)	1160
Largeur (mm)	187
Nominal Product Height (mm)	47
Poids (kg)	3.2

Emballage

Product EAN number	5410288542386
Longueur simple de l'emballage (cm)	153.5
Largeur simple de l'emballage (cm)	6.5
Packaging single depth (cm)	21.0
DUN14 (inner)	05410288542386
Units per outer package	1
Packaging outer length / height (cm)	153.5
Packaging outer width (cm)	6.5
Packaging outer depth (cm)	21.0

Sécurité

Glow Wire Test (°C)	850
Condition de fonctionnement optimal (° C)	-5-25