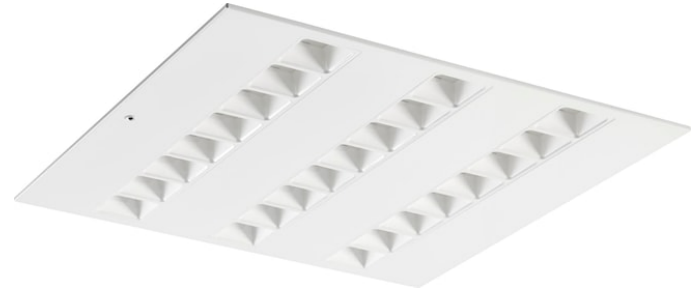


# OPTIX RECESSED 600x600 3L HO 4000K WHT EM

Code article 2023630

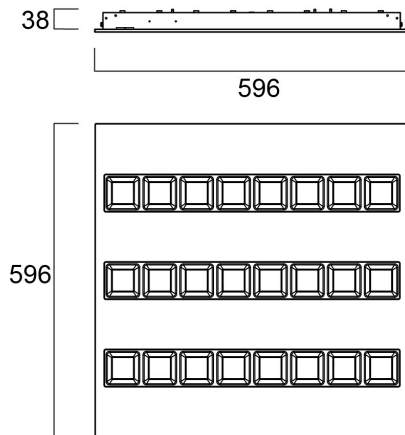
Concord



OPTIX RECESSED 600x600 3L HO 4000K WHT EM is a high efficacy low glare luminaire for office and education applications. Ceiling recessed 600x600 mm. White plastic low glare optics in 3 lines configuration. White RAL9016 fixture body. Constant current driver. 3hr combined maintained emergency version. 4000K Neutral White LED, CRI>80, chromaticity tolerance of 3-step MacAdam ellipse. Luminous flux 4550lm. Power consumption 31W. Luminaire efficacy 147lm/W. Lifespan: 48,500 hours L90B10. UGR<19, Luminance at 65°<3000 Cd/m<sup>2</sup>, IK07, IP20. Photobiological safety risk group 1. Electrical protection Class I. Glow wire test 850°C.

## Atouts techniques

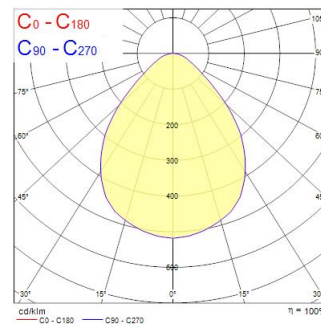
### Dimensions (mm)



### Photométrie

Distance [m]	Cone diameter [m]	E(0°) [lx]	E(C0) [lx]	E(C90) [lx]
0.5	0.92	8107	8107	423°
1.0	1.83	2028	2028	423°
1.5	2.75	1548	1548	423°
2.0	3.67	1068	1068	423°
2.5	4.58	777	777	423°
3.0	5.50	586	586	423°

Distance [m] Cone diameter [m] Illuminance [lx]  
 C0 - C180 (Half beam angle: 85.0°)



# OPTIX RECESSED 600x600 3L HO 4000K WHT EM

Code article 2023630

Concord

## Données générales

Nom du produit	OPTIX RECESSED 600x600 3L HO 4000K WHT EM
Technologie	LED
Cap/Base	N/A
Housing	Steel
Montage	Ceiling recessed mounting
Fixture rating	Enclosed
General application	Education, Office
Performance ambient temperature Tq (°C)	25
ETIM Class	EC002892
Warranty	5 ans

## Données optiques

Fixture luminous flux (lm)	4550
Luminaire efficacy (lm/W)	147
Température de couleur (K)	4000
Couleur de lumière	Neutral White
IRC (Ra)	80
Colour Variation Initial (SDCM)	SDCM3
Glare control	< 19
Photobiological Risk Group	RG1

## Caractéristiques électriques

Consommation électrique totale (W)	31
Primary Supply/Product voltage - min (V)	220
Primary Supply/Product voltage - max (V)	240
Lamp power factor	0.95
THD (at 230 V, 50 Hz, full load, at 100% dimming level) ≤ xx.x %	8
Electrical protection	Class I
Control gear required	No
Type d'appareillage	LED driver constant current
Dimmable	No
Dimming method	N/A
Drive current (mA)	600
Courant d'appel (A)	25
Inrush Duration (µs)	250
Energy Efficiency Class (A->G) of contained light source	C
Nominal Frequency (Hz)	50/60Hz
LED Flickering Rate	Ultra low (5% or less)
Max. products per 10A C Breaker	20
Max. products per 13A C Breaker	30
Max. products per 16A C Breaker	40
Max. products per 20A C Breaker	47
Max. products per 10A B Breaker	10
Max. products per 13A B Breaker	15
Max. products per 16A B Breaker	20
Max. products per 20A B Breaker	24
Connectable conductor cross section - Min (mm <sup>2</sup> )	2.5
Connectable conductor cross section - Max (mm <sup>2</sup> )	2.5

## Durée de vie

Lifespan L70 B50	120000
Lifespan L80 B20	107500
Lifespan L90 B10	48500

# OPTIX RECESSED 600x600 3L HO 4000K WHT EM

Code article 2023630

## Concord

### Données physiques

Housing colour	RAL 9016 - Traffic white / Bezel
IP rating	IP20
IK rating	IK07
Diffuser finish	Matt/satinized
Diffuser material	PC Polycarbonate
Longueur (mm)	596
Largeur (mm)	596
Nominal Product Height (mm)	38
Poids (kg)	5.0

### Emballage

Product EAN number	5025768236305
Longueur simple de l'emballage (cm)	62.0
Largeur simple de l'emballage (cm)	6.5
Packaging single depth (cm)	65.0
DUN14 (inner)	05025768236305
Units per outer package	1
Packaging outer length / height (cm)	62.0
Packaging outer width (cm)	6.5
Packaging outer depth (cm)	65.0

### Sécurité

Glow Wire Test (°C)	850
---------------------	-----