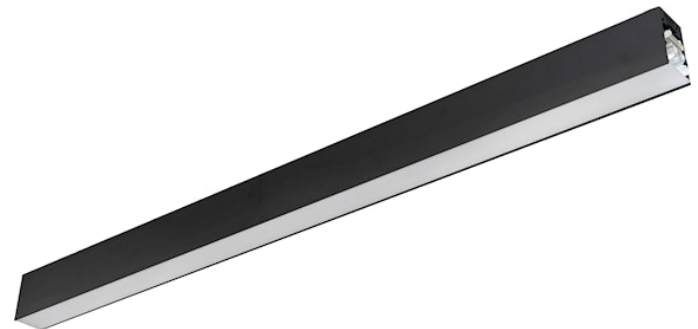


CONTINUUM PLUS 0.9 940 CO OPAL D DALI B

Code article 2064673

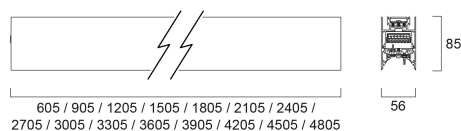
Concord



CONTINUUM PLUS 0.9 940 CO OPAL D DALI B is a linear luminaire with trimless body for surface, suspended or recessed mounting, various mounting accessories, direct light distribution, compact and minimalist design, ideal for offices, meeting rooms, corridors, education facilities, museums and libraries, black (RAL9005) finishing, extruded aluminium body, 905x56x85mm dimensions, opal diffuser, 4000K (neutral white) colour temperature, total system power: 16W, total fixture output: 2200lm, luminaire efficacy: 138lm/W, colour rendering: Ra >90, LED Chromacity: 3 step MacAdam ellipse, lifespan: 89,000 hours L80B50, operating voltage: 220-240V / 50-60Hz, drive current: 375mA, electronic driver, DALI dimmable, Class I electrical protection, IP20, IK03, suitable for internal environment only. The product is delivered without diffuser, end cap, suspension or power supply kit, the accessories eg rolled diffuser (2064605) to be ordered separately.

Atouts techniques

Dimensions (mm)



Photométrie

Distance [m]	Cone diameter [m]	Beam diameter [m]	Beam diameter [ft]	Illuminance [lx]
0.5	1.23	1.01	3.32	3362
			E10°	3218
			E15°	2771
1.0	2.45	2.02	6.61	841
			E10°	798
			E15°	541
1.5	3.68	3.02	9.94	374
			E10°	447
			E15°	321
2.0	4.90	4.03	13.26	210
			E10°	217
			E15°	154
2.5	6.13	5.04	16.58	134
			E10°	171
			E15°	125
3.0	7.36	6.05	19.90	98
			E10°	116
			E15°	83

Distance [m] Cone diameter [m] Beam diameter [m] Beam diameter [ft] Illuminance [lx]

— C0 - C180 (Half beam angle: 105.0°) — C90 - C270 (Half beam angle: 101.0°)



CONTINUUM PLUS 0.9 940 CO OPAL D DALI B

Code article 2064673

Concord

Données générales

Nom du produit	CONTINUUM PLUS 0.9 940 CO OPAL D DALI B
Technologie	LED
Cap/Base	N/A
Housing	Aluminium
Montage	Suspended, Ceiling surface mounting, Ceiling recessed mounting
Built in presence detector	NONE
Fixture rating	Enclosed
General application	Office, Education, Retail
Operating temperature range (°C)	1°C...+25°C
Virtual assistant compatibility	N/A
ETIM Class	EC002892
Warranty	5 ans

Données optiques

Fixture luminous flux (lm)	2200
Luminaire efficacy (lm/W)	138
Température de couleur (K)	4000
Couleur de lumière	Neutral White
IRC (Ra)	90
Colour Variation Initial (SDCM)	SDCM3
Distribution type	Symmetric
Glare control	< 25
Photobiological Risk Group	RG1

Caractéristiques électriques

Emergency type	
Consommation électrique totale (W)	16
Primary Supply/Product voltage - min (V)	220.0
Primary Supply/Product voltage - max (V)	240.0
Lamp power factor	0.97
THD (at 230 V, 50 Hz, full load, at 100% dimming level) ≤ xx.x %	10
Electrical protection	Class I
Control gear required	No
Type d'appareillage	LED driver constant current
Dimmable	Yes
Dimming method	DALI-2
Minimum dimming level (%)	1
Drive current (mA)	375
Courant d'appel (A)	13.6
Inrush Duration (µs)	304
Energy Efficiency Class (A->G) of contained light source	B, C (more than 1 Light Source)
Nominal Frequency (Hz)	50/60Hz
LED Flickering Rate	Ultra low (5% or less)
Max. products per 10A C Breaker	30
Max. products per 13A C Breaker	38
Max. products per 16A C Breaker	46
Max. products per 20A C Breaker	58
Max. products per 10A B Breaker	18
Max. products per 13A B Breaker	23
Max. products per 16A B Breaker	28
Max. products per 20A B Breaker	35
Connectable conductor cross section - Min (mm ²)	0.75
Connectable conductor cross section - Max (mm ²)	1.5

CONTINUUM PLUS 0.9 940 CO OPAL D DALI B

Code article 2064673

Concord

Durée de vie

Lifespan L70 B50	100000
Lifespan L80 B50	89000

Données physiques

Housing colour	RAL 9005 - Jet black
IP rating	IP20
IK rating	IK03
Diffuser finish	Opal
Diffuser material	PC Polycarbonate
Finition réflecteur	Not Applicable
Longueur (mm)	905
Largeur (mm)	56
Nominal Product Height (mm)	85
Poids (kg)	2.4

Emballage

Product EAN number	5025768646739
Longueur simple de l'emballage (cm)	101.0
Largeur simple de l'emballage (cm)	11.7
Packaging single depth (cm)	14.7
DUN14 (inner)	05025768646739
Units per outer package	1
Packaging outer length / height (cm)	101.0
Packaging outer width (cm)	11.7
Packaging outer depth (cm)	14.7

Sécurité

Glow Wire Test (°C)	650
Condition de fonctionnement optimal (° C)	1-25