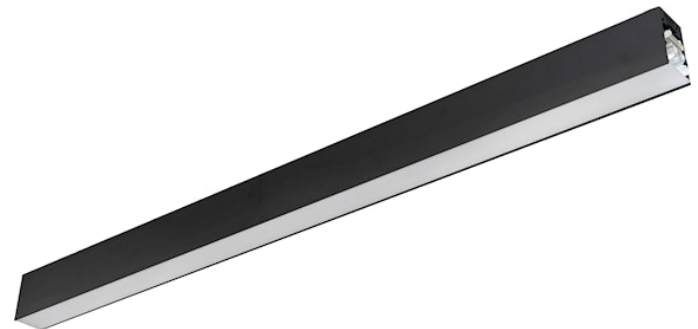
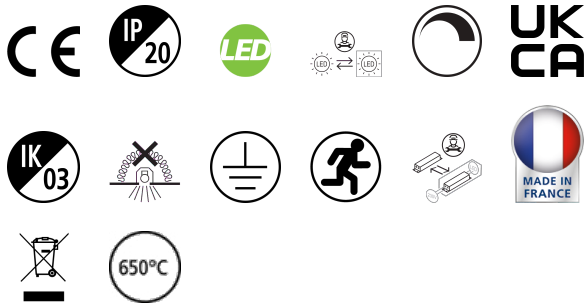


CONTINUUM PLUS 3.6 940 CO UGR D DALI EM B

Code article 2064873

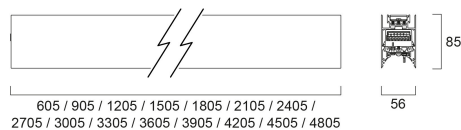
Concord



CONTINUUM PLUS 3.6 940 CO UGR D DALI EM B is a linear luminaire with trimless body for surface, suspended or recessed mounting, various mounting accessories, direct light distribution, compact and minimalist design, ideal for offices, meeting rooms, corridors, education facilities, museums and libraries, black (RAL9005) finishing, extruded aluminium body, 3605x56x85mm dimensions, prismatic diffuser combined with lenses, 4000K (neutral white) colour temperature, total system power: 69W, total fixture output: 9450lm, luminaire efficacy: 137lm/W, colour rendering: Ra >90, LED Chromacity: 3 step MacAdam ellipse, lifespan: 89,000 hours L80B50, operating voltage: 220-240V / 50-60Hz, drive current: 1500mA, electronic driver, DALI dimmable, 3-hours LiFePO4 integrated DALI Self Test emergency, Class I electrical protection, IP20, IK03, suitable for internal environment only. The product is delivered without diffuser, end cap, suspension or power supply kit, the accessories eg rolled diffuser (2064607) to be ordered separately.

Atouts techniques

Dimensions (mm)



Photométrie

Distance [m]	Cone diameter [m]	Beam diameter [m]	Beam diameter [ft]	Illuminance [lx]
0.5	0.71 0.73	0.71 0.73	2.33 2.39	2000 1920
1.0	1.42 1.46	1.42 1.46	4.66 4.78	750 710
1.5	2.12 2.19	2.12 2.19	6.99 7.15	330 310
2.0	2.83 2.92	2.83 2.92	9.32 9.54	180 170
2.5	3.54 3.65	3.54 3.65	11.65 11.91	110 105
3.0	4.25 4.38	4.25 4.38	13.98 14.37	80 75

Distance [m] Cone diameter [m] Beam diameter [m] Beam diameter [ft] Illuminance [lx]

— C0 - C180 (Half beam angle: 72.0°) — C90 - C270 (Half beam angle: 70.0°)



CONTINUUM PLUS 3.6 940 CO UGR D DALI EM B

Code article 2064873

Concord

Données générales

Nom du produit	CONTINUUM PLUS 3.6 940 CO UGR D DALI EM B
Technologie	LED
Cap/Base	N/A
Housing	Aluminium
Montage	Suspended, Ceiling surface mounting, Ceiling recessed mounting
Built in presence detector	NONE
Fixture rating	Enclosed
General application	Office, Education, Retail
Operating temperature range (°C)	1°C...+25°C
Virtual assistant compatibility	N/A
ETIM Class	EC002892
Warranty	5 ans

Données optiques

Fixture luminous flux (lm)	9450
Luminaire efficacy (lm/W)	137
Température de couleur (K)	4000
Couleur de lumière	Neutral White
IRC (Ra)	90
Colour Variation Initial (SDCM)	SDCM3
Distribution type	Symmetric
Glare control	< 19
Photobiological Risk Group	RG1
Luminous flux (emergency) (lm)	540

Caractéristiques électriques

Emergency mode	Maintained
Emergency type	
Emergency duration (h)	3
Consommation électrique totale (W)	69
Actuel (A)	0.197
Primary Supply/Product voltage - min (V)	220.0
Primary Supply/Product voltage - max (V)	240.0
Lamp power factor	0.98
THD (at 230 V, 50 Hz, full load, at 100% dimming level) ≤ xx.x %	10
Electrical protection	Class I
Control gear required	No
Type d'appareillage	LED driver constant current
Dimmable	Yes
Dimming method	DALI-2
Minimum dimming level (%)	1
Drive current (mA)	1500
Courant d'appel (A)	35
Inrush Duration (µs)	170
Energy Efficiency Class (A->G) of contained light source	B
Nominal Frequency (Hz)	50/60Hz
LED Flickering Rate	Ultra low (5% or less)
Max. products per 10A C Breaker	30
Max. products per 13A C Breaker	38
Max. products per 16A C Breaker	46
Max. products per 20A C Breaker	58
Max. products per 10A B Breaker	18
Max. products per 13A B Breaker	23
Max. products per 16A B Breaker	28
Max. products per 20A B Breaker	35
Connectable conductor cross section - Min (mm ²)	0.75
Connectable conductor cross section - Max (mm ²)	1.5

CONTINUUM PLUS 3.6 940 CO UGR D DALI EM B

Code article 2064873

Concord

Durée de vie

Lifespan L70 B50	100000
Lifespan L80 B50	89000

Données physiques

Housing colour	RAL 9005 - Jet black
IP rating	IP20
IK rating	IK03
Diffuser finish	Transparent
Diffuser material	PC Polycarbonate
Finition réflecteur	Not Applicable
Longueur (mm)	3605
Largeur (mm)	56
Nominal Product Height (mm)	85
Poids (kg)	10.4

Emballage

Product EAN number	5025768648733
Longueur simple de l'emballage (cm)	371.0
Largeur simple de l'emballage (cm)	11.7
Packaging single depth (cm)	14.7
DUN14 (inner)	05025768648733
Units per outer package	1
Packaging outer length / height (cm)	371.0
Packaging outer width (cm)	11.7
Packaging outer depth (cm)	14.7

Sécurité

Glow Wire Test (°C)	650
Condition de fonctionnement optimal (° C)	1-25