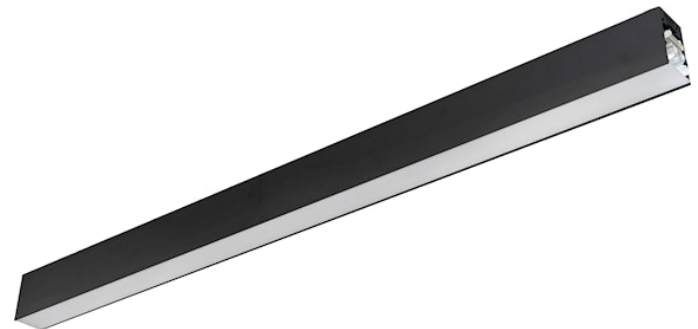
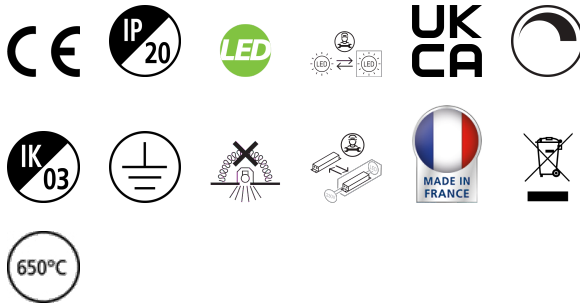


# CONTINUUM PLUS 4.8 940 CO UGR D DALI B

Code article 2065065

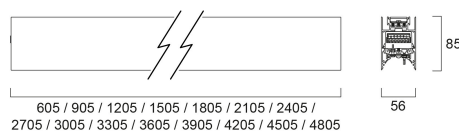
Concord



CONTINUUM PLUS 4.8 940 CO UGR D DALI B is a linear luminaire with trimless body for surface, suspended or recessed mounting, various mounting accessories, direct light distribution, compact and minimalist design, ideal for offices, meeting rooms, corridors, education facilities, museums and libraries, black (RAL9005) finishing, extruded aluminium body, 4805x56x85mm dimensions, prismatic diffuser combined with lenses, 4000K (neutral white) colour temperature, total system power: 84W, total fixture output: 12600lm, luminaire efficacy: 150lm/W, colour rendering: Ra >90, LED Chromacity: 3 step MacAdam ellipse, lifespan: 89,000 hours L80B50, operating voltage: 220-240V / 50-60Hz, drive current: 2000mA, electronic driver, DALI dimmable, Class I electrical protection, IP20, IK03, suitable for internal environment only. The product is delivered without diffuser, end cap, suspension or power supply kit, the accessories eg rolled diffuser (2064607) to be ordered separately.

## Atouts techniques

### Dimensions (mm)



### Photométrie

Distance [m]	Cone diameter [m]	Beam diameter [m]	Beam diameter [ft]	Illuminance [lx]
0.5	0.71	0.73	2.39	3919
			2.39	1074
1.0	1.42	1.46	4.78	979
			4.78	290
1.5	2.13	2.19	7.17	421
			7.17	154
2.0	2.83	2.92	9.56	247
			9.56	62
2.5	3.54	3.65	11.95	158
			11.95	40
3.0	4.25	4.38	14.34	100
			14.34	26



# CONTINUUM PLUS 4.8 940 CO UGR D DALI B

Code article 2065065

Concord

## Données générales

Nom du produit	CONTINUUM PLUS 4.8 940 CO UGR D DALI B
Technologie	LED
Cap/Base	N/A
Housing	Aluminium
Montage	Suspended, Ceiling surface mounting, Ceiling recessed mounting
Built in presence detector	NONE
Fixture rating	Enclosed
General application	Office, Education, Retail
Operating temperature range (°C)	1°C...+25°C
Virtual assistant compatibility	N/A
ETIM Class	EC002892
Warranty	5 ans

## Données optiques

Fixture luminous flux (lm)	12600
Luminaire efficacy (lm/W)	150
Température de couleur (K)	4000
Couleur de lumière	Neutral White
IRC (Ra)	90
Colour Variation Initial (SDCM)	SDCM3
Distribution type	Symmetric
Glare control	< 19
Photobiological Risk Group	RG1

## Caractéristiques électriques

Emergency type	
Consommation électrique totale (W)	84
Primary Supply/Product voltage - min (V)	220.0
Primary Supply/Product voltage - max (V)	240.0
Lamp power factor	0.98
THD (at 230 V, 50 Hz, full load, at 100% dimming level) ≤ xx.x %	6.1
Electrical protection	Class I
Control gear required	No
Type d'appareillage	LED driver constant current
Dimmable	Yes
Dimming method	DALI-2
Minimum dimming level (%)	1
Drive current (mA)	2000
Courant d'appel (A)	35
Inrush Duration (µs)	170
Energy Efficiency Class (A->G) of contained light source	B
Nominal Frequency (Hz)	50/60Hz
LED Flickering Rate	Ultra low (5% or less)
Max. products per 10A C Breaker	21
Max. products per 13A C Breaker	28
Max. products per 16A C Breaker	35
Max. products per 20A C Breaker	45
Max. products per 10A B Breaker	13
Max. products per 13A B Breaker	17
Max. products per 16A B Breaker	21
Max. products per 20A B Breaker	27
Connectable conductor cross section - Min (mm <sup>2</sup> )	0.75
Connectable conductor cross section - Max (mm <sup>2</sup> )	1.5

# CONTINUUM PLUS 4.8 940 CO UGR D DALI B

Code article 2065065

Concord

## Durée de vie

Lifespan L70 B50	100000
Lifespan L80 B50	89000

## Données physiques

Housing colour	RAL 9005 - Jet black
IP rating	IP20
IK rating	IK03
Diffuser finish	Transparent
Diffuser material	PC Polycarbonate
Finition réflecteur	Not Applicable
Longueur (mm)	4805
Largeur (mm)	56
Nominal Product Height (mm)	85
Poids (kg)	12.8

## Emballage

Product EAN number	5025768650651
Longueur simple de l'emballage (cm)	491.0
Largeur simple de l'emballage (cm)	11.7
Packaging single depth (cm)	14.7
DUN14 (inner)	05025768650651
Units per outer package	1
Packaging outer length / height (cm)	491.0
Packaging outer width (cm)	11.7
Packaging outer depth (cm)	14.7

## Sécurité

Glow Wire Test (°C)	650
Condition de fonctionnement optimal (° C)	1-25