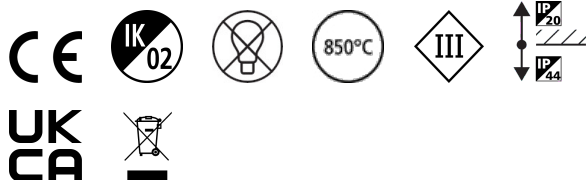


INSTAR TREND SW IP44 INDOOR WH

Code article 3079060

SYLVANIA

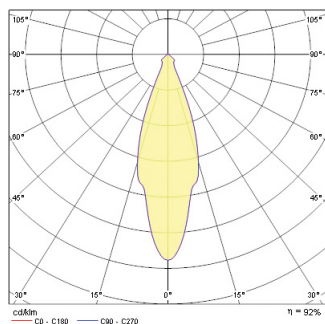
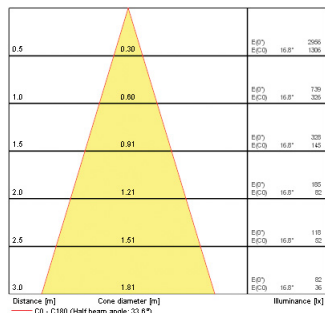
PROTM



INSTAR TREND SW IP44 INDOOR WH

Atouts techniques

Photométrie



INSTAR TREND SW IP44 INDOOR WH

Code article 3079060

SYLVANIA

Données générales

Nom du produit	INSTAR TREND SW IP44 INDOOR WH
Technologie	Light Source Not Integrated
Cap/Base	GX5.3
Housing	Aluminium
Montage	Ceiling recessed mounting
Environment	Indoor
General application	Hospitality, Residential & Consumer
ETIM Class	EC001744
Numéro virtuel FI	4274923
Numéro virtuel SE	7461923
E-number Norway	3223415
Warranty	3 ans

Données optiques

LOR (%)	Dependent on lamp
Chromaticité réglable	N
Distribution type	Adjustable

Caractéristiques électriques

Lampe incluse	Fixture without Lightsource
Primary Supply/Product voltage - min (V)	12
Primary Supply/Product voltage - max (V)	12
Electrical protection	Class III
Montage de l'appareillage	Remote
Nominal Frequency (Hz)	50/60Hz

Données physiques

Housing colour	White
IP rating	IP44/20
IK rating	IK02
Max. Lamp Diameter (mm) - D	95
Poids (kg)	0.164
Recessed Depth (mm)	90

Emballage

Product EAN number	8711971790600
Longueur simple de l'emballage (cm)	13.2
Largeur simple de l'emballage (cm)	10.0
Packaging single depth (cm)	8.4
DUN14 (inner)	18711971790607
Units per outer package	30
Packaging outer length / height (cm)	28.4
Packaging outer width (cm)	28.5
Packaging outer depth (cm)	53.2

Sécurité

Glow Wire Test (°C)	850
---------------------	-----