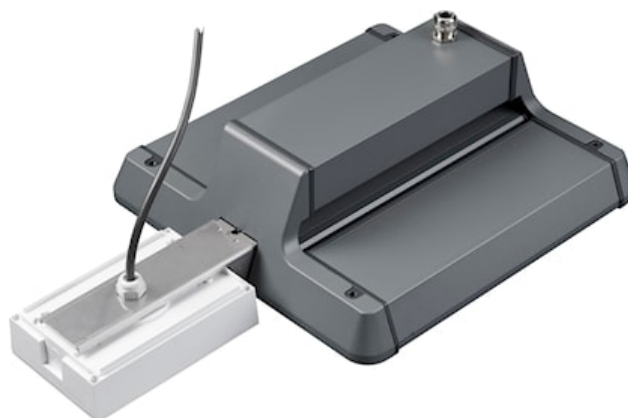


SYLBAY GEN II EM KIT ESCAPE ROUTE

Artikelnummer 0040030

SYLVANIA



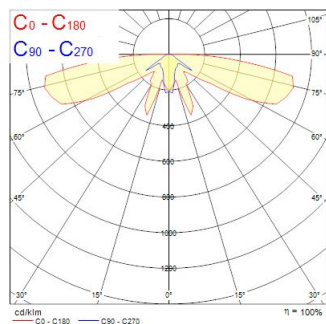
Sylbay Gen II EM Kit Escape Route provides a simple conversion of High Bay fitting with a high performance self-contained LED emergency luminaire KIT suitable for escape routes, delivering 3 hours rated emergency output. Self testing with DALI monitoring capability. Supplied with all mounting accessories

Technische gegevens

Fotometrie

Distance [m]	Cone diameter [m]	Beam diameter [m]	Illuminance [lx]
0.5	1.55 12.14	0.57 0.57 0.57	180 14 0
1.0	3.10 24.33	1.14 1.14 1.14	45 3 0
1.5	4.65 36.49	1.71 1.71 1.71	18 2 0
2.0	6.21 48.65	2.28 2.28 2.28	10 1 0
2.5	7.76 60.82	2.85 2.85 2.85	7 1 0
3.0	9.31 72.98	3.42 3.42 3.42	5 1 0

Distance [m] Cone diameter [m] Illuminance [lx]
 — C0 - C180 (Half beam angle: 170.6°)
 — C90 - C270 (Half beam angle: 114.4°)



SYLBAY GEN II EM KIT ESCAPE ROUTE

Artikelnummer 0040030

SYLVANIA

Algemene gegevens

Productnaam	SYLBAY GEN II EM KIT ESCAPE ROUTE
Technologie	LED
Algemene toepassing	Logistiek & Industrie
ETIM klasse	EC002556
Garantie	3 jaar

Optische gegevens

Lumenstroom armatuur (lm)	217
CRI (Ra)	75
Fotobiologische risicogroep	RG1
Luminous flux (emergency) (lm)	200

Elektrische gegevens

Nood duur (u)	3
Lamp arbeidsfactor	0.44
Elektrische beschermingsklasse	Klasse II

Fysieke gegevens

Kleur behuizing	Wit
IP waarde	IP65
IK waarde	IK03
Gewicht (kg)	1.1

Verpakkingen

EAN code	5410288400303
Enkele lengte verpakking (cm)	32.5
Enkele breedte verpakking (cm)	32.5
Hoogte eenheidsverpakking (cm)	12.5
DUN14 (inner)	05410288400303
Eenheden per omdoos	1
Lengte omdoos (cm)	32.5
Breedte omdoos (cm)	32.5
Diepte omdoos (cm)	12.5