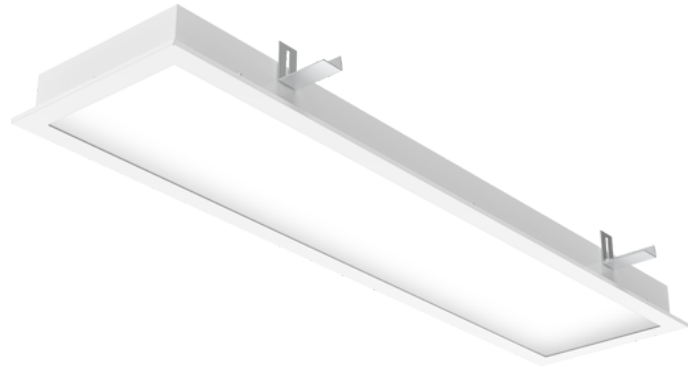
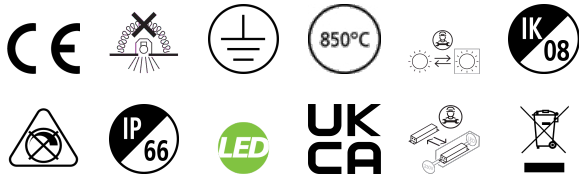


LiteGuard™



0.5	0.82 0.82	E171 E1C90 38.9° E1C90 39.2°	8472 2181 2208
1.0	1.65 1.63	E171 E1C90 38.9° E1C90 39.2°	208 528 552
1.5	2.47 2.45	E171 E1C90 38.9° E1C90 39.2°	132 242 238
2.0	3.30 3.26	E171 E1C90 38.9° E1C90 39.2°	80 138 135
2.5	4.12 4.06	E171 E1C90 38.9° E1C90 39.2°	57 87 85
3.0	4.95 4.88	E171 E1C90 38.9° E1C90 39.2°	43 61 61

Distance [m] Cone diameter [m] Illuminance [lx]

— C0 - C180 (Half beam angle: 78.4°)
— C90 - C270 (Half beam angle: 79.0°)

