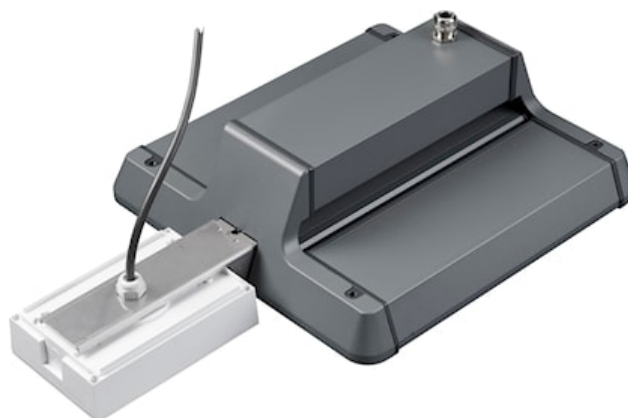


# Sylbay Gen II EM Kit Standard

Artikelnummer 0040027

**SYLVANIA**



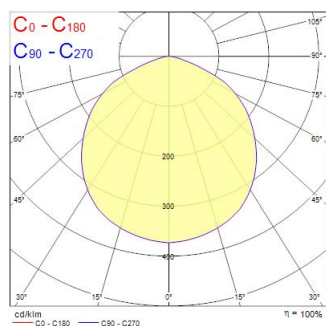
Sylbay Gen II EM Kit Standard provides a simple conversion of High Bay fitting with a high performance self-contained LED emergency luminaire KIT suitable for open areas, delivering 3 hours rated emergency output. Self testing with DALI monitoring capability. Supplied with all mounting accessories

## Technische gegevens

### Fotometrie

Distance [m]	Cone diameter [m]	Beam diameter [m]	Beam angle [°]	Illuminance [lx]
0.5	1.45	0.07	55.4°	299
1.0	2.90	0.14	55.4°	75
1.5	4.35	0.21	55.4°	33
2.0	5.80	0.28	55.4°	19
2.5	7.25	0.35	55.4°	12
3.0	8.70	0.42	55.4°	8

Distance [m] Cone diameter [m] Illuminance [lx]  
C0 - C180 (Half beam angle: 110.8°)



# Sylbay Gen II EM Kit Standard

Artikelnummer 0040027

**SYLVANIA**

## Algemene gegevens

Productnaam	Sylbay Gen II EM Kit Standard
Technologie	Emergency Pack
Algemene toepassing	Logistiek & Industrie
ETIM klasse	EC002472
Garantie	3 jaar

## Optische gegevens

Lumenstroom armatuur (lm)	200
CRI (Ra)	75
Fotobiologische risicogroep	RG1
Luminous flux (emergency) (lm)	200

## Elektrische gegevens

Nood duur (u)	3
Primaire voedingsspanning min	220
Primaire voedingsspanning max	240
Lamp arbeidsfactor	0.44
Elektrische beschermingsklasse	Klasse II

## Fysieke gegevens

Kleur behuizing	Wit
IP waarde	IP65
IK waarde	IK03
Gewicht (kg)	1.1

## Verpakkingen

EAN code	5410288400273
Enkele lengte verpakking (cm)	32.5
Enkele breedte verpakking (cm)	32.5
Hoogte eenheidsverpakking (cm)	12.5
DUN14 (inner)	05410288400273
Eenheden per omdoos	1
Lengte omdoos (cm)	32.5
Breedte omdoos (cm)	32.5
Diepte omdoos (cm)	12.5