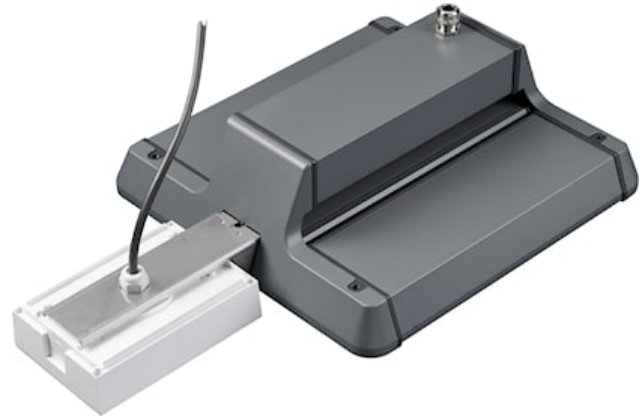


# SYLBAY GEN II EM KIT ESCAPE ROUTE

Artikelnummer 0040030

**SYLVANIA**



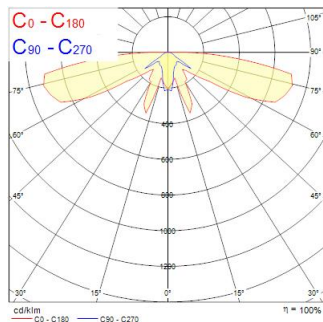
Sylbay Gen II EM Kit Escape Route provides a simple conversion of High Bay fitting with a high performance self-contained LED emergency luminaire KIT suitable for escape routes, delivering 3 hours rated emergency output. Self testing with DALI monitoring capability. Supplied with all mounting accessories

## Technische gegevens

### Fotometrie

| Distance [m] | Cone diameter [m] | Illuminance [lx] |
|--------------|-------------------|------------------|
| 0.5          | 1.55<br>12.14     | 180<br>14<br>0   |
| 1.0          | 3.10<br>24.33     | 45<br>3<br>0     |
| 1.5          | 4.65<br>36.49     | 18<br>1<br>0     |
| 2.0          | 6.21<br>48.65     | 9<br>0<br>0      |
| 2.5          | 7.76<br>60.82     | 4<br>0<br>0      |
| 3.0          | 9.31<br>72.99     | 2<br>0<br>0      |

Distance [m]    Cone diameter [m]    Illuminance [lx]  
 — C0 - C180 (Half beam angle: 170.6°)  
 — C90 - C270 (Half beam angle: 114.4°)



# SYLBAY GEN II EM KIT ESCAPE ROUTE

Artikelnummer 0040030

**SYLVANIA**

## Algemene gegevens

|                     |                                   |
|---------------------|-----------------------------------|
| Productnaam         | SYLBAY GEN II EM KIT ESCAPE ROUTE |
| Technologie         | LED                               |
| Algemene toepassing | Logistiek & Industrie             |
| ETIM klasse         | EC002556                          |
| Garantie            | 3 jaar                            |

## Optische gegevens

|                                |     |
|--------------------------------|-----|
| Lumenstroom armatuur (lm)      | 217 |
| CRI (Ra)                       | 75  |
| Fotobiologische risicogroep    | RG1 |
| Luminous flux (emergency) (lm) | 200 |

## Elektrische gegevens

|                                |           |
|--------------------------------|-----------|
| Nood duur (u)                  | 3         |
| Lamp arbeidsfactor             | 0.44      |
| Elektrische beschermingsklasse | Klasse II |

## Fysieke gegevens

|                 |      |
|-----------------|------|
| Kleur behuizing | Wit  |
| IP waarde       | IP65 |
| IK waarde       | IK03 |
| Gewicht (kg)    | 1.1  |

## Verpakkingen

|                                |                |
|--------------------------------|----------------|
| EAN code                       | 5410288400303  |
| Enkele lengte verpakking (cm)  | 32.5           |
| Enkele breedte verpakking (cm) | 32.5           |
| Hoogte eenheidsverpakking (cm) | 12.5           |
| DUN14 (inner)                  | 05410288400303 |
| Eenheden per omdoos            | 1              |
| Lengte omdoos (cm)             | 32.5           |
| Breedte omdoos (cm)            | 32.5           |
| Diepte omdoos (cm)             | 12.5           |