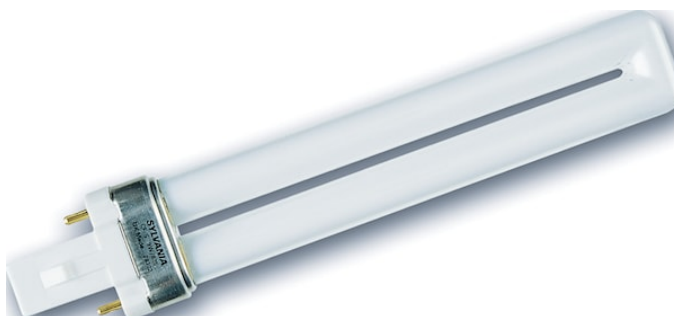
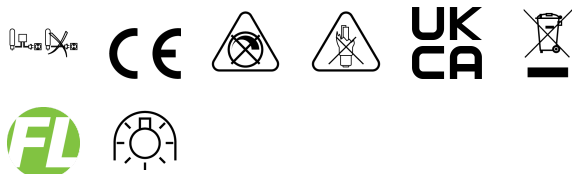


LYNX-S 11W/840 G23 SLV 10

Item No: 0025891

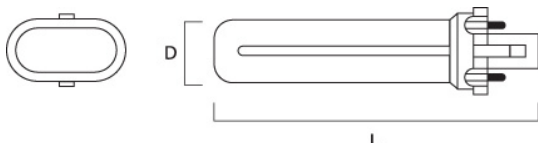
SYLVANIA



- Single-bend pin base compact lamp, - Suitable for operation on electronic control gear (SE version), - For use with magnetic ballast (S Version), - Dimmable with suitable ballast, - Excellent colour rendering, - Suitable for emergency lighting

Technical Assets

Dimensions (mm)



Photometrics

General data

Nome do produto	LYNX-S 11W/840 G23 SLV 10
Tecnologia	Fluorescent
Watt (Rated) (W)	11
Forma da lâmpada	Other
Casquilho	G23
Acabamento da lâmpada	Frosted/Coated
Luminária	Open
Aplicação geral	Educação, Hotelaria, Logistics & Industry, Museums & Galleries, Escritórios, Retalho, Residential & Consumer
ETIM	EC000087
E-number SE	8357267

Optical data

Useful luminous flux (Φ_{use})	900
Luminous flux (Rated) (lm)	900
Rated lamp efficacy 100h 50Hz at 25°C (lm/W)	76
Ambient temperature for maximum luminous flux (°C)	25
Temperatura de cor (K)	4000
Cor da luz	Cool White
Colour Code	840
CRI	82
Varição da cor (SDCM)	SDCM5
Adjustable chromaticity	Não
Grupo de risco fotobiológico	Not applicable
Rated lumen maint. factor (%) at 2000 h 50Hz	85
Rated lumen maint. factor (%) at 4000 h 50Hz	78

LYNX-S 11W/840 G23 SLV 10

Item No: 0025891

SYLVANIA

Rated lumen maint. factor (%) at 8000 h 50Hz	75
Electrical data	
Power consumption (W)	11
Potência	11
Starting time (max) (s)	10 Sec
Supply current (A)	0.155
Tensão de alimentação do produto – mín. (V)	220
Tensão de alimentação do produto – máx. (V)	240
Ignition voltage (V)	186
Control gear required	Yes
Regulável	No
Modo de regulação	N/A
Lamp Energy Label (class)	G
kWh per 1000 hours burning time	11

Lifetime data

Vida média (horas)	12000
Average life (Rated) (h)	12000
Rated survival factor (%) at 2000 h 50Hz	96
Rated survival factor (%) at 4000 h 50Hz	90
Rated survival factor (%) at 6000 h 50Hz	80
Rated survival factor (%) at 8000 h 50Hz	72
Rated survival factor (%) at 12000 h 50Hz	62

Physical data

Comprimento nominal do produto (mm)	236
Nominal Product Diameter (mm)	33
Max. Length base to base (mm) - A	236
Max. Lamp Diameter (mm) - D	13
Peso (kg)	0.038

Packaging

Código EAN	5410288258911
Comprimento / altura da embalagem individual (cm)	2.2
Largura da embalagem individual (cm)	3.8
Profundidade da embalagem individual (cm)	24.1
DUN14 (inner)	15410288258918
Units per inner package	10
Packaging inner length / height (cm)	12.4
Packaging inner width (cm)	7.9
Packaging inner depth (cm)	25.6
DUN14 (outer)	25410288258915
Unidades por embalagem exterior	100
Comprimento / altura da embalagem exterior (cm)	42.3
Largura da embalagem exterior (cm)	27.6
Profundidade da embalagem exterior (cm)	25.7

Safety data

Lamp mercury content (mg)	2.5
Breakage cleaning instructions	Applicable
Recommendation for disposal at end of life	Applicable
Special purpose lamp	No
Dry applications use only	Yes
Suitable for household illumination	Yes