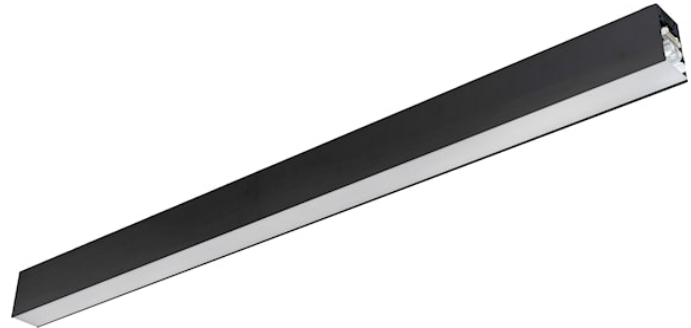
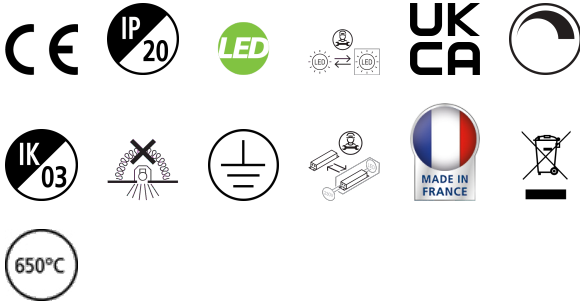


# CONTINUUM PLUS 4.8 940 CO OPAL DI DALI B

Item No: 2065077

Concord



CONTINUUM PLUS 4.8 940 CO OPAL DI DALI B is a linear luminaire with trimless body for suspended mounting, various mounting accessories, direct/indirect light distribution (60/40 ratio), compact and minimalist design, ideal for offices, meeting rooms, corridors, education facilities, museums and libraries, black (RAL9005) finishing, extruded aluminium body, 4805x56x85mm dimensions, opal diffuser, 4000K (neutral white) colour temperature, total system power: 144W, total fixture output: 20400lm, luminaire efficacy: 142lm/W, colour rendering: Ra >90, LED Chromacity: 3 step MacAdam ellipse, lifespan: 89,000 hours L80B50, operating voltage: 220-240V / 50-60Hz, drive current: 3400mA, electronic driver, DALI dimmable, direct/indirect independently addressable, Class I electrical protection, IP20, IK03, suitable for internal environment only. The product is delivered without diffuser, end cap, suspension or power supply kit, the accessories eg rolled diffuser (2064605) to be ordered separately.

## Technical Assets

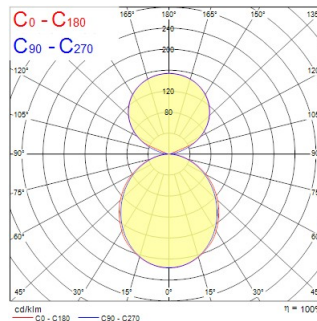
### Dimensions (mm)



### Photometrics

| Distance [m] | Cone diameter [m] | Beam diameter [m] | Illuminance [lx] |
|--------------|-------------------|-------------------|------------------|
| 0.5          | 1.23<br>1.31      | 0.97<br>1.04      | 17921<br>2220    |
| 1.0          | 2.45<br>2.62      | 1.94<br>2.08      | 4413<br>890      |
| 1.5          | 3.68<br>3.92      | 2.91<br>3.12      | 1961<br>440      |
| 2.0          | 4.90<br>5.23      | 3.88<br>4.16      | 1103<br>340      |
| 2.5          | 6.13<br>6.54      | 4.85<br>5.19      | 708<br>180       |
| 3.0          | 7.36<br>7.85      | 5.82<br>6.27      | 490<br>120       |

Distance [m]    Cone diameter [m]    Beam diameter [m]    Illuminance [lx]  
 — C0 - C180 (Half beam angle: 105.2°)  
 — C90 - C270 (Half beam angle: 101.6°)



# CONTINUUM PLUS 4.8 940 CO OPAL DI DALI B

Item No: 2065077

Concord

## General data

|                                  |  |
|----------------------------------|--|
| Product name                     | CONTINUUM PLUS 4.8 940 CO OPAL DI DALI B |
| Technology                       | LED                                      |
| Cap/Base                         | N/A                                      |
| Housing                          | Aluminium                                |
| Mount                            | Suspended                                |
| Built in presence detector       | NONE                                     |
| Fixture rating                   | Enclosed                                 |
| General application              | Office, Education, Retail                |
| Operating temperature range (°C) | 1°C...+25°C                              |
| Virtual assistant compatibility  | N/A                                      |
| ETIM Class                       | EC002892                                 |
| Warranty                         | 5 years                                  |

## Optical data

|                                   |               |
|-----------------------------------|---------------|
| Fixture luminous flux (lm)        | 20400         |
| Luminaire efficacy (lm/W)         | 142           |
| Correlated colour temperature (k) | 4000          |
| Light colour                      | Neutral White |
| CRI (Ra)                          | 90            |
| Colour Variation Initial (SDCM)   | SDCM3         |
| Distribution type                 | Symmetric     |
| Glare control                     | < 25          |
| Photobiological Risk Group        | RG1           |

## Electrical data

|  |                                |
|--|--------------------------------|
| Emergency type   |                                |
| Total power consumption (W)                                      | 144                            |
| Primary Supply/Product voltage - min (V)                         | 220.0                          |
| Primary Supply/Product voltage - max (V)                         | 240.0                          |
| Lamp power factor  | 0.98                           |
| THD (at 230 V, 50 Hz, full load, at 100% dimming level) ≤ xx.x % | 10                             |
| Electrical protection  | Class I                        |
| Control gear required  | No                             |
| Control gear type  | LED driver constant current    |
| Dimmable   | Yes                            |
| Dimming method   | DALI-2                         |
| Minimum dimming level (%)  | 1                              |
| Drive current (mA)   | 3400                           |
| Inrush Current (A)   | 31.5                           |
| Inrush Duration (µs)   | 215                            |
| Energy Efficiency Class (A->G) of contained light source         | C, B(more than 1 Light Source) |
| Nominal Frequency (Hz)   | 50/60Hz                        |
| LED Flickering Rate  | Ultra low (5% or less)         |
| Max. products per 10A C Breaker                                  | 15                             |
| Max. products per 13A C Breaker                                  | 20                             |
| Max. products per 16A C Breaker                                  | 25                             |
| Max. products per 20A C Breaker                                  | 32                             |
| Max. products per 10A B Breaker                                  | 9                              |
| Max. products per 13A B Breaker                                  | 12                             |
| Max. products per 16A B Breaker                                  | 15                             |
| Max. products per 20A B Breaker                                  | 19                             |
| Connectable conductor cross section - Min (mm <sup>2</sup> )     | 0.75                           |
| Connectable conductor cross section - Max (mm <sup>2</sup> )     | 1.5                            |

# CONTINUUM PLUS 4.8 940 CO OPAL DI DALI B

Item No: 2065077

Concord

## Lifetime data

|                  |        |
|------------------|--------|
| Lifespan L70 B50 | 100000 |
| Lifespan L80 B50 | 89000  |

## Physical data

|                             |                      |
|-----------------------------|----------------------|
| Housing colour              | RAL 9005 - Jet black |
| IP rating                   | IP20                 |
| IK rating                   | IK03                 |
| Diffuser finish             | Opal                 |
| Diffuser material           | PC Polycarbonate     |
| Reflector finish            | Not Applicable       |
| Nominal Product Length (mm) | 4805                 |
| Nominal Product Width (mm)  | 56                   |
| Nominal Product Height (mm) | 85                   |
| Weight (kg)                 | 12.8                 |

## Packaging

|                                       |                |
|---------------------------------------|----------------|
| Product EAN number                    | 5025768650774  |
| Packaging single length / height (cm) | 491.0          |
| Packaging single width (cm)           | 11.7           |
| Packaging single depth (cm)           | 14.7           |
| DUN14 (inner)                         | 05025768650774 |
| Units per outer package               | 1              |
| Packaging outer length / height (cm)  | 491.0          |
| Packaging outer width (cm)            | 11.7           |
| Packaging outer depth (cm)            | 14.7           |

## Safety data

|                                  |      |
|----------------------------------|------|
| Glow Wire Test (°C)              | 650  |
| Optimal operating condition (°C) | 1-25 |