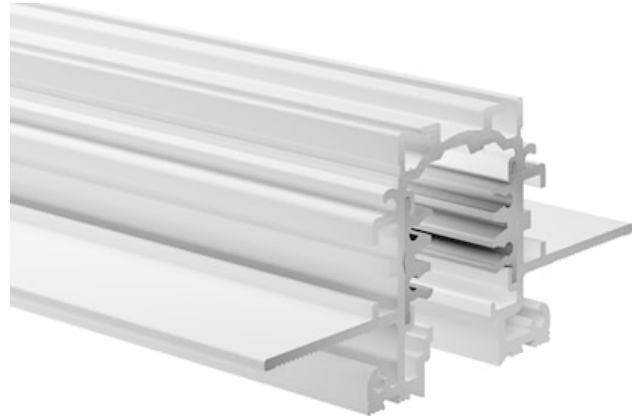


Lytespan Trimless Recessed 1m White 9000-1/w-tr

Item No: 2070246

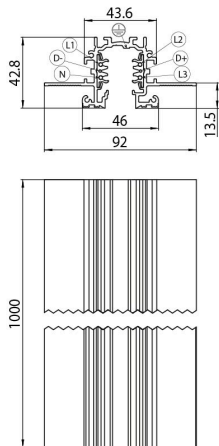
Concord



Lytespan Trimless Recessed - 3 circuit track + 2 circuit control L1/L2/L3/Neutral/ground 16A/440V + D+/D- 2x1A/50V FELV AC, DALI, DMX, 1-10V etc. compatible, circuits can be controlled individually, aluminum body, suitable for trimless recessed installation, 1000 x 92 x 42.8 mm (L x W x H), white (RAL 9010). Please check compatible adaptor list.

Technical Assets

Dimensions (mm)



Photometrics

Lytespan Trimless Recessed 1m White 9000-1/w-tr

Item No: 2070246

Concord

General data

Product name	Lytespan Trimless Recessed 1m White 9000-1/w-tr
Technology	Non - Electrical Device
Accessory type	Electrical
Type of accessory	Track
Housing	Aluminium
Mount	Ceiling recessed mounting, Wall recessed
General application	Hospitality, Museums & Galleries, Office
ETIM Class	EC000101
Warranty	5 years

Electrical data

Primary Supply/Product voltage - min (V)	220.0
Primary Supply/Product voltage - max (V)	240.0
Electrical protection	Class I

Physical data

Housing colour	White
Nominal Product Length (mm)	1000
Nominal Product Width (mm)	92
Nominal Product Height (mm)	42.8
Weight (kg)	1.7

Packaging

Product EAN number	5025768702466
Packaging single length / height (cm)	106.0
Packaging single width (cm)	6.2
Packaging single depth (cm)	6.2
DUN14 (inner)	05025768702466
Units per outer package	1
Packaging outer length / height (cm)	106.0
Packaging outer width (cm)	6.2
Packaging outer depth (cm)	6.2