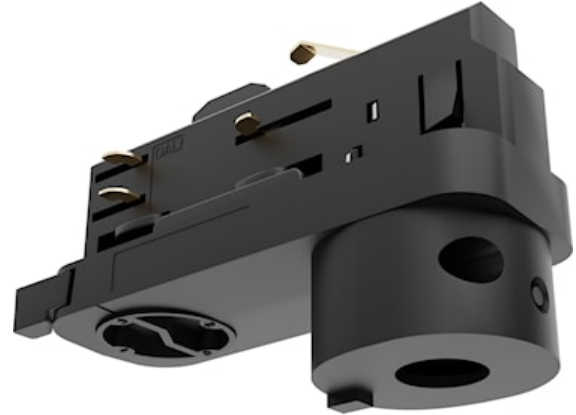


Lytespan Pendant Asymmetric Adaptor DALI Black 9209/b

Item No: 2070287

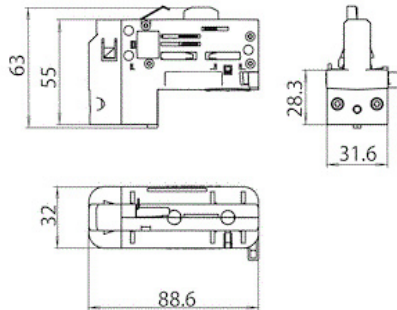
Concord



Lytespan Pendant Adaptor, asymmetric DALI Adaptor , 6 conductors with phase selector. Polycarbonate body, copper alloy contacts. Black Max. load. 100N, Max. torque 2.5Nm Compatible with Eurostandard tracks. Compatible with OneTrack.

Technical Assets

Dimensions (mm)



Photometrics

Lytespan Pendant Asymmetric Adaptor DALI Black 9209/b

Item No: 2070287

Concord

General data

Product name	Lytespan Pendant Asymmetric Adaptor DALI Black 9209/b
Technology	Non - Electrical Device
Accessory type	Electrical
Type of accessory	Pendant adaptor
Mount	Track mounting
General application	Museums & Galleries, Office, Hospitality
ETIM Class	EC002556
Warranty	5 years

Electrical data

Primary Supply/Product voltage - min (V)	220
Primary Supply/Product voltage - max (V)	240
Connectable conductor cross section - Max (mm ²)	2.5

Physical data

Housing colour	Black
Nominal Product Length (mm)	90
Nominal Product Width (mm)	32
Nominal Product Height (mm)	56
Weight (kg)	0.5

Packaging

Product EAN number	5025768702879
Packaging single length / height (cm)	16.0
Packaging single width (cm)	16.0
Packaging single depth (cm)	4.0
DUN14 (inner)	05025768702879
Units per outer package	1
Packaging outer length / height (cm)	16.0
Packaging outer width (cm)	16.0
Packaging outer depth (cm)	4.0