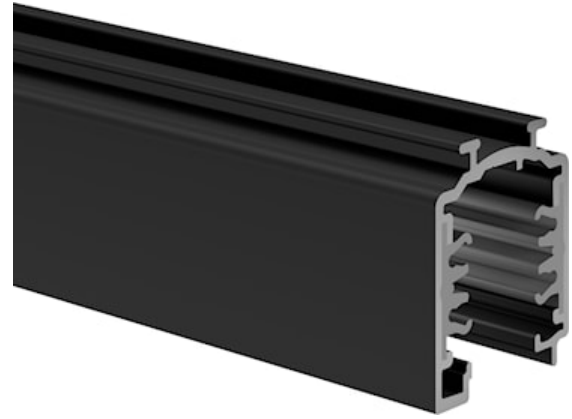


# OneTrack 3m Black 9000a-3/b-st

Item No: 9200507

**SYLVANIA**

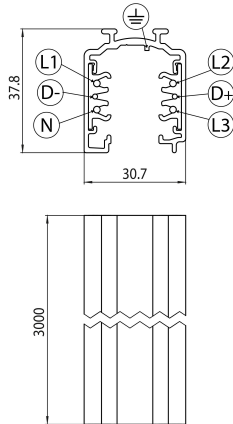
**PRO**<sup>TM</sup>



Onetrack - 3 circuit track + 2 circuit control L1/L2/L3/Neutral/ground 16A/440V + D+/D- 2x1A/50V FELV AC, DALI, DMX, 1-10V etc. compatible, circuits can be controlled individually, aluminum body, suitable for surface and suspended mounting, 3000 x 30.7 x 37.8 mm (L x W x H), black (RAL 9005).

## Technical Assets

### Dimensions (mm)



### Photometrics

# OneTrack 3m Black 9000a-3/b-st

Item No: 9200507

**SYLVANIA**

## General data

Product name	OneTrack 3m Black 9000a-3/b-st
Technology	Non - Electrical Device
Accessory type	Electrical
Type of accessory	Track
Housing	Aluminium
Mount	Suspended, Ceiling surface mounting, Wall surface mounted
General application	Museums & Galleries, Office
ETIM Class	EC000101
Warranty	5 years

## Electrical data

Primary Supply/Product voltage - min (V)	220
Primary Supply/Product voltage - max (V)	240
Electrical protection	Class I

## Physical data

Housing colour	Black
Nominal Product Length (mm)	3000
Nominal Product Width (mm)	30.7
Nominal Product Height (mm)	37.8
Weight (kg)	2.645

## Packaging

Product EAN number	4012289005078
Packaging single length / height (cm)	305.1
Packaging single width (cm)	3.1
Packaging single depth (cm)	3.7
Units per outer package	1
Packaging outer length / height (cm)	305.1
Packaging outer width (cm)	3.1
Packaging outer depth (cm)	3.7