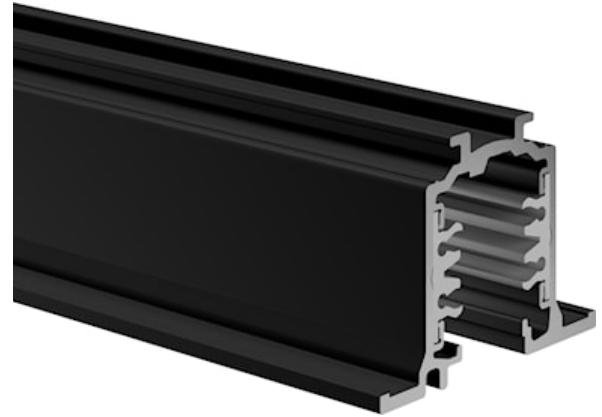


OneTrack Recess 2m Black Carton Tube 9000-2/b-r

Item No: 9200606

SYLVANIA

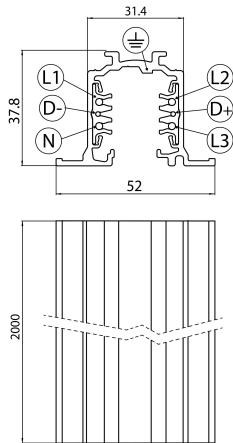
PROTM



OneTrack Recessed - 3 circuit track + 2 circuit control L1/L2/L3/Neutral/ground 16A/440V + D+/D- 2x1A/50V FELV AC, DALI, DMX, 1-10V etc. compatible, circuits can be controlled individually, aluminum body, suitable for recessed mounting, 2000 x 30.7 x 37.8 mm (L x W x H), black (RAL 9005). Singular carton tube packaging.

Technical Assets

Dimensions (mm)



Photometrics

OneTrack Recess 2m Black Carton Tube 9000-2/b-r

Item No: 9200606

SYLVANIA

General data

Product name	OneTrack Recess 2m Black Carton Tube 9000-2/b-r
Technology	Non - Electrical Device
Accessory type	Electrical
Type of accessory	Track
Housing	Aluminium
Mount	Ceiling recessed mounting, Wall recessed
General application	Museums & Galleries, Office
ETIM Class	EC000101
Warranty	5 years

Electrical data

Primary Supply/Product voltage - min (V)	220
Primary Supply/Product voltage - max (V)	240
Electrical protection	Class I

Physical data

Housing colour	Black
Nominal Product Length (mm)	2000
Nominal Product Width (mm)	52
Nominal Product Height (mm)	37.8
Weight (kg)	2.27

Packaging

Product EAN number	4012289006068
Packaging single length / height (cm)	206.0
Packaging single width (cm)	6.2
Packaging single depth (cm)	6.2
Units per outer package	1
Packaging outer length / height (cm)	206.0
Packaging outer width (cm)	5.4
Packaging outer depth (cm)	5.4