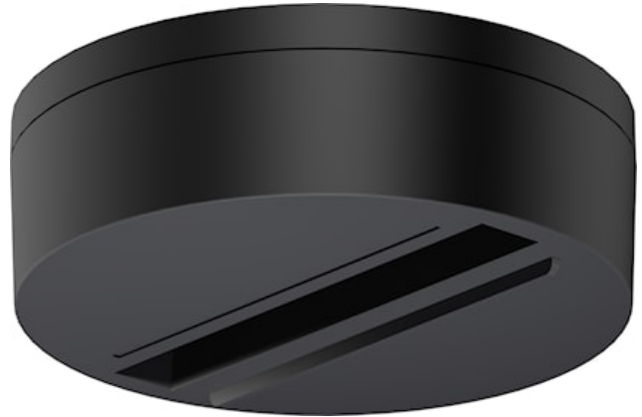


OneTrack Surface Fix Point Black 9000/bpu-d-b

Item No: 9200752

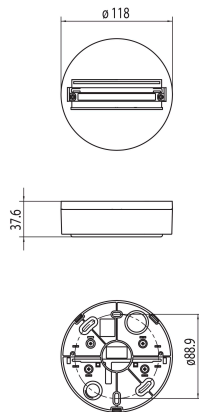
SYLVANIA



OneTrack accessory, fix-point for surface mounting, DALI compatible, 3 circuit track + 2 circuit control, 250V 10A 120V 1200W 1A -50Vac FELV. Polycarbonate body, copper alloy contacts. Max load: 50N. Black.

Technical Assets

Dimensions (mm)



Photometrics

OneTrack Surface Fix Point Black 9000/bpu-d-b

Item No: 9200752

SYLVANIA

General data

Product name	OneTrack Surface Fix Point Black 9000/bpu-d-b
Technology	Non - Electrical Device
Accessory type	Mounting, Electrical
Type of accessory	Monopoint
Mount	Ceiling surface mounting, Wall surface mounted
Environment	Internal
General application	Museums & Galleries, Office
ETIM Class	EC002556
Warranty	5 years

Electrical data

Primary Supply/Product voltage - min (V)	220
Primary Supply/Product voltage - max (V)	240
Connectable conductor cross section - Max (mm ²)	2.5

Physical data

Housing colour	Black
Nominal Product Height (mm)	37.6
Nominal Product Diameter (mm)	118
Weight (kg)	0.21

Packaging

Product EAN number	4012289007522
Packaging single length / height (cm)	12.2
Packaging single width (cm)	12.2
Packaging single depth (cm)	4.5
Units per outer package	200
Packaging outer length / height (cm)	40.5
Packaging outer width (cm)	30.5
Packaging outer depth (cm)	22.5